

The All-New Diesel That's Got It All.



2006 WINNEBAGO TOUR™

AN EXCEPTIONAL NEW CHOICE IN DIESEL MOTOR HOMES.

The all-new Tour combines our exclusive StoreMore® slideout system with a dual, flat-floor slideout design. It's another Winnebago Industries innovation.



40FD - Bayou Bay with Concert Cherry

THE DIESEL YOU'VE BEEN WAITING FOR.

Combine an impressive interior height of more than 7'2" for headroom, opposing flat floors in the living room on 36LD, 36RD and 40FD, three triple and one quad-slide floorplan, and you have the 2006 Winnebago Tour, a sparkling new addition to the Winnebago lineup of diesel motor homes. Built on the Freightliner® Evolution™ Chassis, a Winnebago Industries exclusive, the Tour features impressive handling performance and exterior storage capacity. Our engineers worked closely with Freightliner to develop this chassis with one-piece formed steel rails for increased mid-section storage, better weight distribution and improved floorplan flexibility. The 2006 Tour is powered by a 350-hp CAT® C7 diesel engine for smooth, effortless driving.

SmartSpace™, Winnebago Industries' highly functional approach to design, makes the most of interior living space in the Tour by maximizing functionality and focusing on user-friendly features.

Get your daily dose of your favorite programs and movies with the Tour's entertainment system. It has a 27" Sony® flat-face TV and a Sony Home Theater Sound System with DVD/VCR player. You can increase your viewing options with the available manual, automatic or in-motion satellite system. The 40FD features an entertainment center cabinet (shown here) and an available electric fireplace for added ambiance.

The 2,000-watt inverter/charger provides 110-volt power for appliance and entertainment features when shoreline generator power is not available.



On the cover: 40KD with Harvest full-body paint.

KICK BACK AND ENJOY THE VIEW.

With a long list of innovative features, time spent in the Tour can hardly be considered "roughing it."



40KD - Sangria with Washed Maple



IT'S THE LITTLE THINGS THAT MAKE A BIG DIFFERENCE.

The Tour is packed full of amenities to make your life on the road more enjoyable. The windows are flush-mounted for good looks and dual-glazed for thermal efficiency. The shades offer varying levels of light and privacy and can be adjusted for use during the day or night. The beautiful cabinetry has a catalyzed protective coating and gives the Tour an upscale touch. Floor-ducted, forced-air heating and ceiling-ducted TrueAir® residential central air conditioning keep the temperature inside the Tour comfortable. And on brisk mornings or chilly nights, the standard heat pump helps keep you warm without requiring use of the furnace.

Upon entering the Tour, you'll encounter quality Stitchcraft furniture (available in leather).

Sit back and relax in the comfortable Euro Chair; it comes standard on the 36LD and 36RD, and is optional on the 40FD and 40KD. The dining table (not available on the 40FD) is not only comfortable and easy to use, it also expands to accommodate up to four when company drops by. A child-seat tether anchor in the forward-facing dinette seat gives you greater flexibility while traveling. The available multifunction table offers seating for two or four and doubles as a functional work space or computer area (not available on the 36LD).

With a variety of seating options to choose from, you're sure to have the Tour that is just right for you.

FIVE-STAR ACCOMMODATIONS, ANYWHERE.

Whether it's a quick snack or a full meal, with the feature-packed galley in the Tour, you can prepare your favorites anywhere the road takes you.



40KD

A GALLEY WORTHY OF A CHEF.

High-end amenities can be found throughout the galley. Enjoy the luxury of the solid-surface countertops with sink covers for the double sink. Recessed fluorescent lighting gives the area an upscale look while the separate faucet for the Everpure® water filtration system provides great-tasting water. The cabinetry is attractive and gives you many storage options above and below the counter. The drawers feature full-extension drawer slides so that you can easily reach all of your stored items. A unique pullout galley island cabinet comes standard on the 36RD and 40FD as does a roll-out galley storage bin on the 40KD. Choose the 36LD floorplan and get an innovative breakfast bar, complete with two stools, three large drawers and a sliding countertop with leaf storage.

Appliances include a standard double-door refrigerator with an available icemaker and a 30" microwave oven with range, or select the available microwave/convection oven. Upgrades include the available four-door refrigerator with icemaker for even more cold storage. You can also choose an available drawer-style dishwasher for even easier cleanup. For a sleek, contemporary look, choose the Stainless Steel Package (shown here). It includes stainless steel door panels on the refrigerator, range, microwave and available dishwasher. Premium residential furniture includes the BenchMark™ full comfort dinette, featuring taller dinette seat backs, innerspring seat cushions and contemporary styling. Better yet, the seats easily flip up revealing large storage spaces — or fold down the table to convert the dinette into a comfortable bed.



THE ROAD HAS NEVER FELT MORE LIKE HOME.

With spacious, comfortable seating and high-tech electronics and appliances, the Tour puts the comforts of home at your fingertips.



40KD



COMFORT COMES IN MANY SHAPES AND SIZES.

The bedroom area offers luxury in the form of a Vantage Point™ Sleep Number® bed by Select Comfort® (queen size available in all models, king size available in the 40KD). Using the digital hand control, the Sleep Number bed quickly adjusts to each individual's desired firmness to ensure a perfect night's sleep. For additional comfort, a ceiling fan is standard in the bedroom. The bedroom's rear slideout gives you plenty of elbow room to lie back and enjoy your favorite programs on the standard 20" Sony TV or the 20" LCD flat-face TV on the 36RD and 40FD. For added convenience, remote extenders allow you to operate the front DVD/VCR from the bedroom.

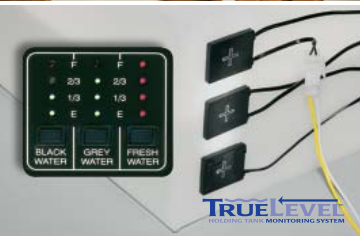
The bathroom comes with all the comforts of home, including a residential-height porcelain toilet and an available handheld showerhead. The bath-

room's molded sink, one-piece fiberglass shower and textured-glass shower door allow for easy cleanup. The single-control shower faucet has a shut-off valve and the Moen® Posi-Temp® feature provides consistent water temperature, even when water pressure suddenly changes. The 40KD offers an available lavatory in the bedroom area. Every Tour also comes with a variable-speed water pump for consistent pressure without surging and a 10-gallon water heater that can operate on 120-volt AC or LP gas.

The Rest Easy® multi-position lounge gives you push-button convenience — changing quickly and easily from a sofa to a recliner with ottoman to a comfortable bed. The J-Lounge, also available in leather, includes a drawer below for added storage.

AT YOUR FINGERTIPS.

From our OnePlace® systems center that puts frequently checked switches and gauges in one central location, to our ergonomically designed dash, everything about the Tour is designed to make your experiences more enjoyable.



THE FEATURES YOU'RE LOOKING FOR.

The OnePlace systems center puts important checkpoints in the same place for easy access and operation. The PowerLine® energy management system monitors 110-volt usage and delays postponable electrical loads to prevent the annoyance of tripped campground circuit breakers. Our TrueAir residential central air conditioning uses a dual-compressor Coleman®-Mach® unit, and is 40 percent faster and 10 percent quieter than roof air units. The below-floor location eliminates overhead vibration, noise and roof condensation runoff associated with roof air units and makes service easier. By using Mirus* detector cells on the outside of our holding tanks, our TrueLevel™ system eliminates probes and gives you accurate tank level readings time after time. With the KeyOne™ System, a single key opens most exterior compartments and doors, so you don't have to keep track of a whole slew of keys.

The available TripTek™ collects, analyzes and saves vehicle data and displays it on the rearview Sony color monitor. Information displayed includes distance to destination, time traveled, fuel economy and a handy pre-trip checklist.

*Mirus is a trademark of Material Sciences Corporation.

Stay connected with the four available two-way radios that have up to a five-mile range and recharge at their built-in charger.

Behind the wheel of the Tour, everything is designed for your comfort and convenience. The SmartWheel™ steering wheel includes controls for key functions, and tilts and telescopes for your driving style. Controls for the electronic transmission are located on the left-side driver's panel for ease of use. An available sideview video camera system controlled by your turn signals can be viewed through your Audiovox® rearview monitor. The RV Radio® is Sirius® satellite ready and includes AM/FM stereo; CD player; weather band; and large, easy-to-use buttons and knobs. For added versatility, the RV Radio comes with two remotes — one handheld and one on the steering wheel — for your convenience. Upgrade your RV Radio with the available Sirius Satellite Radio Package. Sirius brings you 120 channels of crystal clear programming, and a free six-month subscription (not available in Canada).



WHERE FORM MEETS FUNCTION.

Having features is one thing. Making them user friendly is what we excel at.



WORTH A CLOSER LOOK.

The outside of the Tour has a lot to offer as well. From our exterior entertainment center that brings your entertainment outside, to our StoreMore slideouts that allow you easy access to your belongings by extending the storage compartment with the slideout, there's no more crawling on your hands and knees to access your gear.

Not only is the exterior storage plentiful, it's user friendly thanks to the available Smart Storage™ compartment featuring a box with a flip-down door and a folding ladder stored in its own compartment (available on the 40FD and 40KD). Choose the available slideout tray with freezer for added cold storage; the tray also provides easy access to your favorite gear.

Every Tour comes equipped with an exterior entertainment center with AM/FM radio, CD player and remote TV jack. Upgrade your exterior entertainment with the available 20" flat-face TV and DVD player for even more entertainment options.

IT'S THE LITTLE THINGS.

To get even more enjoyment out of your Tour, choose the available patio awning package with wind sensor and remote, also available with entrance and window awnings. Other popular exterior features include dual fuel fills, exterior wash station and available water system winterization package.

With the Tour, even service connections are a snap. Controls are clearly labeled. QuickPort® makes for quick connections with a convenient opening that allows you to easily pass hoses and electrical cords through, while keeping compartment doors closed. The sewer hose comes with QuickConnect® for quick and clean hookups.

INTERIORS/FLOORPLANS

Striking full-body paint on the outside. Luxurious, attractive fabrics inside.

We believe the same high standards we apply to construction should apply to interior design. That's why we create efficient floorplans based on customer input, why we look for durable fabrics in pleasing colors and why we handcraft our own cabinets using traditional panel-and-rail construction.

- A-Main Fabric
- B-Carpet
- C-Bedsread
- D-Leather



Concert Cherry



Portsmouth Oak



Sierra Maple



Washed Maple



Bayou Bay

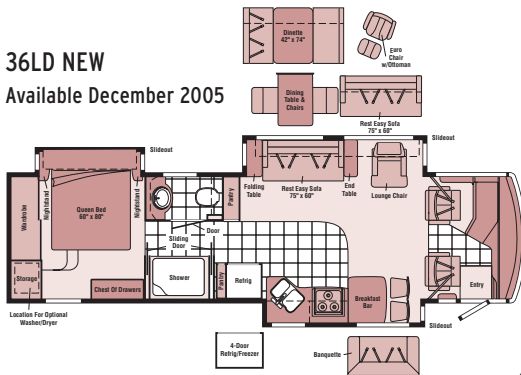


Sangria

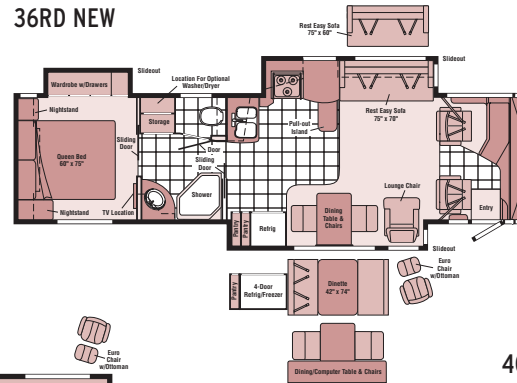


Tuscan Ridge

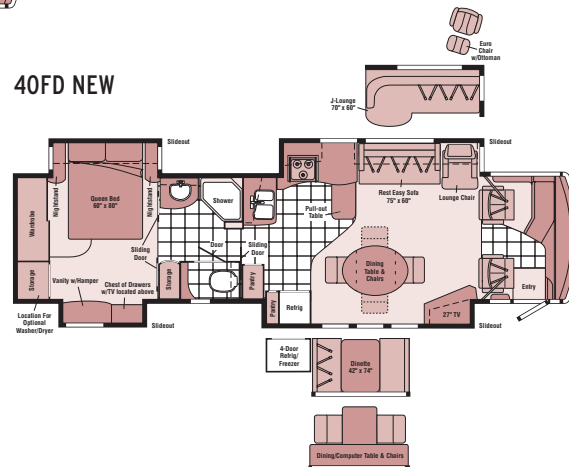
36LD NEW
Available December 2005



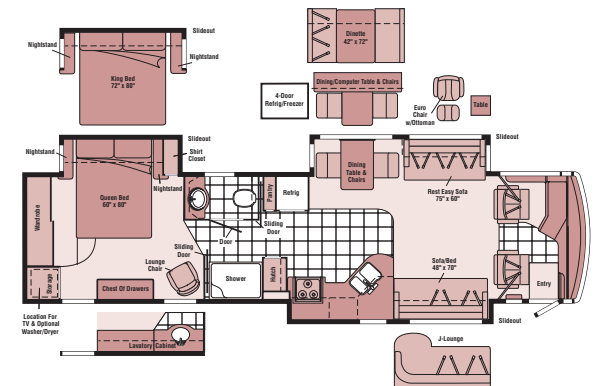
36RD NEW



40FD NEW



40KD NEW



- Vinyl Tile Flooring
- Seat Belts

Note: Dimensions shown are for sleeping space only and may vary due to styling differences.

EXTERIORS

Loaded with innovations and industry-exclusive features, the Tour gives you what others can't.

Automotive-style innovations complement the Tour's extraordinary versatility. Exterior mirrors are positioned for maximum visibility and feature a breakaway design for added clearance when storing your vehicle. The mirror arms even include turn-signal indicators as an added courtesy to other drivers. An easy-to-operate switch lets you disconnect the chassis batteries during long-term storage.



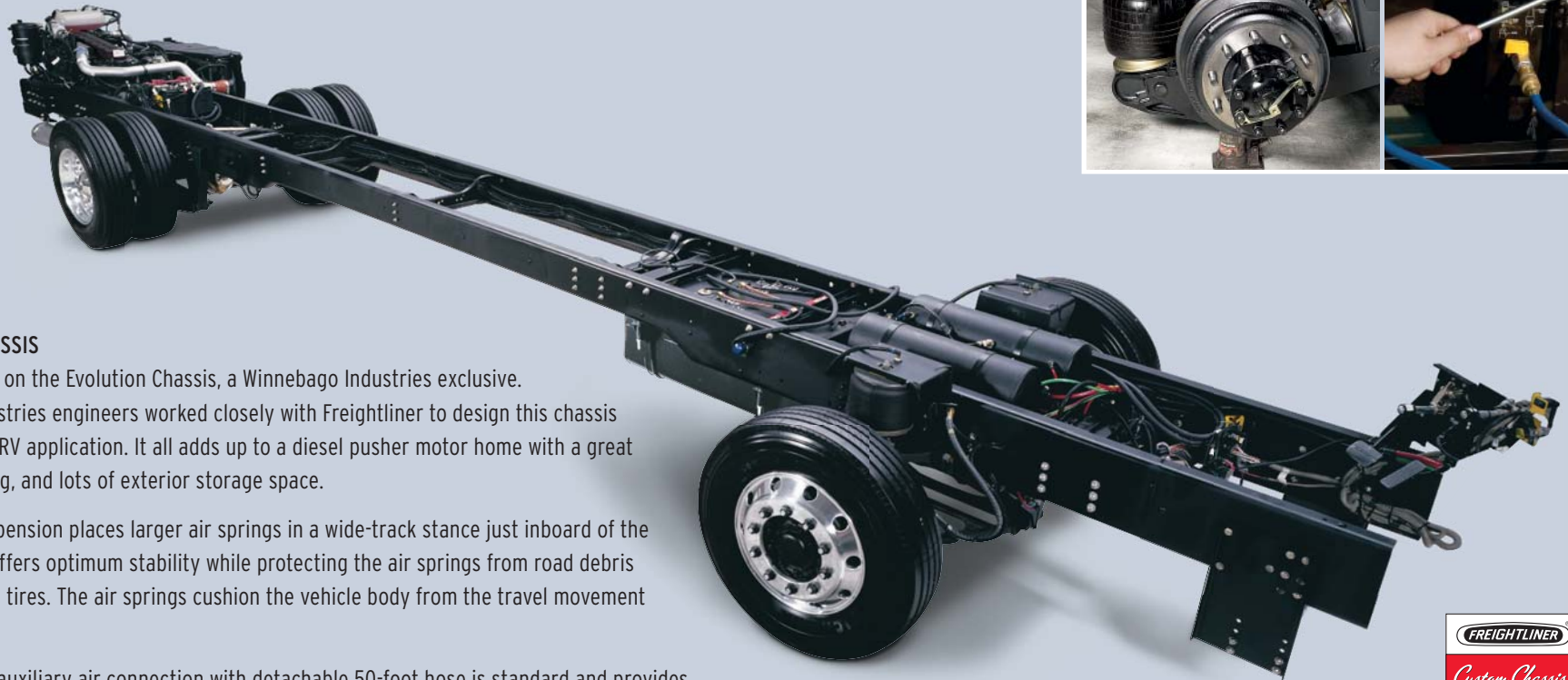
Harvest



Vineyard



Prairie



EVOLUTION CHASSIS

The Tour is built on the Evolution Chassis, a Winnebago Industries exclusive. Winnebago Industries engineers worked closely with Freightliner to design this chassis for its intended RV application. It all adds up to a diesel pusher motor home with a great ride and handling, and lots of exterior storage space.

The rear air suspension places larger air springs in a wide-track stance just inboard of the rear wheels. It offers optimum stability while protecting the air springs from road debris kicked up by the tires. The air springs cushion the vehicle body from the travel movement of the rear axle.

The convenient auxiliary air connection with detachable 50-foot hose is standard and provides a ready source of compressed air for tires, balls, etc. (air chuck not included).



THE LEADER AT EVERY TURN™

2006 TOUR SPECIFICATIONS

Attention to detail, inside and out.



	36LD NEW	36RD NEW	40FD NEW	40KD NEW
Length	36'6"	36'8"	39'9"	39'11"
Exterior Height^a	12'3"	12'2"	12'3"	12'3"
Exterior Width^b	8'5.5"	8'5.5"	8'5.5"	8'5.5"
Exterior Storage^c (cu. ft.)	109.9	122.2	161.8	122.2
Interior Height	7'2"	7'2"	7'2"	7'2"
Interior Width	8'5"	8'5"	8'5"	8'5"
Freshwater Capacity w/Heater^d (gal.)	106	106	106	106
Holding Tank Capacity - Black/Gray^d (gal.)	54/54	54/54	57/73	57/72
LP Capacity^e (gal.)	31	31	31	31
Fuel Capacity (gal.)	100	100	100	100
GCWR^f (lbs.)	39,410	39,410	42,000	42,000
GVWR (lbs.)	29,410	29,410	32,000	32,000
GAWR - Front (lbs.)	10,410	10,410	12,000	12,000
GAWR - Rear (lbs.)	19,000	19,000	20,000	20,000
Wheelbase	228"	228"	267"	267"

Standard - S Optional - 0

36LD 36RD 40FD 40KD

AUTOMOTIVE/CHASSIS

	S	S	S	S
Chassis - Evolution Chassis Freightliner, Caterpillar® 7.2L turbo-charged diesel, 350-hp, rear radiator, Allison® 6-speed electronic 3000 MH transmission, NeWay® front & rear air suspension, 160-amp. alternator, 4-wheel ABS, exhaust brake				
Air Accessory Manifold quick connect, 50' air hose, pressure gauge, manual air shutoff, Leveling Jacks HWH® hydraulic, manual control, Spare Tire storage, Tire Tools wrench & leverage bar, Trailer Hitch¹ 10,000-lb. drawbar/500 lbs. maximum vertical tongue weight & wiring, 7-pin connector, Wheels stylized aluminum	S	S	S	S
Leveling Jacks hydraulic, automatic controls	0	0	0	0

CAB AREA & DRIVER CONVENIENCES

	S	S	S	S
Cab Seats (leather w/vinyl surround) armrests, lumbar support, multiadj. slide/recline & swivel, Compass electronic w/outdoor thermometer, Console Center Cabinet , Cruise Control , Exhaust Brake Control , Floor Mat (driver) carpet, Freightliner Information Center (see Freightliner's Owner's Manual), Map Lights (2) , Monitor System rearview, b/w, single camera & one-way audio, Audiovox , Power Door Locks keyless entry w/remote, Powerpoints (3) 12-volt DC, Shades (front) wraparound, pleated w/wands, light-filtering, cab windows, roller, Steering Wheel custom, black leather, SmartWheel w/power-assist, tilt, telescope column, Sunvisors powered, Trim Panel driver & passenger sides, Window (driver) full-slider w/screen, dual-glazed, Window (passenger) partial, vertical slider w/screen, dual-glazed, Windshield Wipers intermittent				
Cab Seats 6-way power-assist, driver, driver/passenger (avail. w/footrest), Defroster Fans (2) aux. 2-speed w/instrument panel switch, GPS Navigation System Alpine, Trip Computer TripTek, Video Camera System two side-mounted cameras, turn signal activated	0	0	0	0

ENTERTAINMENT

	S	S	S	S
CB Prep antenna, antenna lead, 12-volt DC power supply, Entertainment Center (exterior) AM/FM radio, CD player w/remote, DC receptacle, AC duplex receptacle, TV jack, radio antenna, speakers (2), lockable compartment, Home Theater Sound System , amplifier, DVD/VCR combo, receiver, speakers (5), subwoofer, Sony, RV Radio (cab) AM/FM/stereo/CD, remotes, roof-mounted flexible rubber antenna, speakers (4), weather band, Sirius satellite ready, Radio Power Switch main/auxiliary battery, Satellite System Ready , Telephone input & interior jacks, TV Enhancement Package antenna (amplified), interior jack(s), coax wiring, cable input, exterior jack, reminder light, Video Selection System				

Standard - S Optional - 0

36LD 36RD 40FD 40KD

CB Radio, Compact Multidisc Changer w/remote & 10-disc changer, Radios (4) 2-way, Satellite Dish Antenna RV digital, manual, elevation sensing unit, Satellite Dish Antenna RV digital, power, Satellite Dish RV digital, in-motion, King-Dome®, Satellite Radio , Sirius, six-month subscription included (NA in Canada), Stereo System (Bedroom) AM/FM CD player, clock/radio, Audiovox, Entertainment Center w/TV & DVD (exterior) AM/FM radio, DVD w/remote, DC receptacle, AC duplex receptacle, TV AC color, stereo w/remote, 20" flat-face, Sony speakers (2), bass speaker, storage compartment	0	0	0	0
Fireplace electric, front slideout entertainment center			0	
TV 20" AC color, bedroom, flat-face, LCD, stereo w/remote, remote extenders, ViewSonic®	S	S	S	S
TV 27" AC color front cabinet, flat-face, stereo w/remote, Sony	S	S		S
TV 27" AC color front slideout entertainment center, flat-face, stereo w/remote, Sony			S	

INTERIOR

Ceiling vinyl, Curtain front wraparound, pleated w/wands, Light wall lamp, Lights ceiling w/wall switches, incandescent, Lights fluorescent, recessed, galley, dinette, lounge w/2-way wall switches, Lights reading, aux., Shades pleated, day/night, Sliding Stepwell Cover Panel powered, Windows dual-glazed/thermo-insulated	S	S	S	S
Picture(s)		S		S

CABINETY

Concert Cherry or Portsmouth Oak or Sierra Maple or Washed Maple stile-and-rail construction w/raised-panel inserts	0	0	0	0
---	---	---	---	---

COUNTERTOPS

Solid-Surface galley & bath	S	S	S	S
------------------------------------	---	---	---	---

FLOORCOVERING

Carpeting w/pad, Vinyl Tile galley, bath & cab	S	S	S	S
--	---	---	---	---

FURNITURE

Banquette (fabric) w/throw pillows, access to storage below, Banquette (leather) w/throw pillows, access to storage below, Rest Easy multi-position lounge (leather 75" x 60"), w/folding dining table, (2) folding chairs, removable armrest w/beverage holder	0			
BenchMark full comfort dinette (fabric) w/access to storage below, child-seat tether anchor, storage cabinet (36LD)	0	0	0	0
Breakfast Bar w/stools (2), padded seats, backrest, Rest Easy multi-position lounge (fabric 75" x 60"), w/folding dining table, (2) folding chairs, removable armrest w/beverage holder	S			
Chair (leather) Euro recliner w/ottoman	0	0	0	
Chair (leather) Euro recliner w/ottoman, end table w/storage, J-Lounge (fabric or leather) access to storage below, throw pillows (2)				0
Chair (fabric) lounge, incliner back w/footrest, end table w/storage (36LD)	S	S	S	
Dining Table & Chairs (2) freestanding, (2) folding, oval freestanding table (40FD)	0	S	S	S
Sofa (fabric 48" x 70")				S
Multifunction Table & Chairs (2) freestanding, (2) folding, legless table, Rest Easy multi-position lounge (fabric or leather 75" x 60") dual recliners, removable armrest w/beverage holder (N/A 40KD)		0	0	0
Rest Easy multi-position lounge (fabric 75" x 60"), removable armrest w/beverage holder	0		S	S
Rest Easy multi-position lounge (fabric 75" x 70") dual trundle		S		
Rest Easy multi-position lounge (leather 75" x 60"), removable armrest w/beverage holder	0		0	0
Rest Easy multi-position lounge (leather 75" x 70") dual trundle		0		
Rest Easy J-Lounge (leather 70" x 60")			0	

2006 TOUR SPECIFICATIONS

Standard - S Optional - O

36LD 36RD 40FD 40KD

GALLEY

	S	S	S	S
Countertop w/backsplash, Faucet single-control, Moen, Lights fluorescent on ceiling & under cabinet, Microwave Oven w/range fan, touch control, Sharp®, Mirror(s) , Pantry , Powerpoint 12-volt DC receptacle, Range Cover flush-mounted (countertop material), Range Top 3-burner, one high output w/storage below, recessed, sealed burners, Amana®, Refrigerator/Freezer large double-door, Norcold®, Roof Vent insulated, powered ventilator fan, Silverware Tray , Sink double-bowl, molded w/sink covers (countertop material), Towel Rack wire, Wastepaper Basket , Water Purification System Everpure	S	S	S	S
Countertop Extension flip-up	S			
Island Cabinet w/solid-surface countertop, roll-out		S	S	
Island Storage Bin large, roll-out				S
Dishwasher drawer-style, Microwave/Convection Oven w/range fan, residential 30", Range 3-burner, one high output, w/large oven, glass door w/storage below, recessed, sealed burners, Amana, Refrigerator/Freezer large double-door w/icemaker, Refrigerator/Freezer 4-door w/icemaker, Norcold, Stainless Steel Package refrigerator, range/oven, microwave, dishwasher, chrome galley faucet w/pull out sprayer	O	O	O	O

BATH

	S	S	S	S
Cabinet lavatory, Cabinet linen, Cabinet medicine, Countertop w/backsplash, solid-surface, Faucet(s) (lavatory) single-control, Faucet (shower) single-control w/flexible showerhead, Moen Posi-Temp, Light shower, Light fluorescent, recessed, Lights makeup, Robe Hook , Roof Vent insulated, powered ventilator fan, private toilet room, Shower w/wall surround, Shower Door textured glass, Sink oval, Toilet (porcelain) w/foot pedal	S	S	S	S
Magazine Rack			S	
Showerhead handheld	O			O
Shower Package fold-down shower seat, handheld showerhead		O	O	

BEDROOM

	S	S	S	S
Bed queen, Serta® innerspring w/underbed storage, bedspread, pillows, throw pillows, Cabinet wardrobe, carpeted floor, Ceiling Fan , Headboard , Lights reading, Light decorative ceiling w/dimmer, Nightstand(s) , Powerpoint 12-volt DC receptacle, Wardrobe carpet, clothes rod, shelf, light	S	S	S	S
Bed Sleep Number queen-sized mattress by Select Comfort	O	O	O	O
Bed Sleep Number king-sized mattress by Select Comfort, Cabinet lavatory, Cabinet medicine, Faucet (lavatory) single-control, Lights makeup, Sink oval				O
Chair (fabric) lounge, Flexsteel				S
Chest of Drawers	S			S
Hamper, Vanity Cabinet			S	
Light(s) decorative wall lamp(s)		S		S

EXTERIOR

	S	S	S	S
Awning Rails w/rain gutters, Door entrance w/separate screen door, deadbolt lock, keyless entry w/remote, Entrance Door Step double, electric w/doorjamb switch, Full-Body Paint Options Vineyard, Harvest, Prairie (w/protective film below entry door), Ladder , Lights fog lamps, Light porch w/interior switch, Light under hood, Lights compartment, Light service, driver side, Locking Fuel-Fill Doors , Mirrors electric remote w/defrost, chrome head, turn signal, Mudflaps (2) rear, Receptacle AC duplex, Sidewall Skin one-piece smooth fiberglass, high-gloss, Storage Compartments smooth valance panels, trunk liner, gas cylinders, TriMark® KeyOne System, paddle latch	S	S	S	S

a The height of each model is measured to the top of the tallest standard feature and is based on the curb weight of a typically equipped unit. The actual height of your vehicle may vary by several inches depending on chassis or equipment variations. Please contact your dealer for further information.
 b Tour floorplans feature a wide-body design – over 96". In making your purchase decision, you should be aware that some states restrict access on some or all state roads to 96" in body width. Before making your purchase decision, you should confirm the road usage laws in the states of interest to you.
 c The load capacity of your motor home is designated by weight, not by volume, so you cannot necessarily use all available space when loading your motor home.
 d Capacities are based on measurements prior to tank installation. Slight capacity variations can result due to installation applications.
 e Capacities shown are tank manufacturer's listed water capacity (W.C.). Actual filled LP capacity is 80% of listing due to overfilling prevention device on tank.

Standard - S Optional - O

36LD 36RD 40FD 40KD

	0	0	0	0
Awning Package patio w/wind sensor & remote, entrance door, electric, Air Horns roof-mounted, chrome, dual, Awning windows, acrylic, Mud Guard full-width, Undercoating , Front Exterior Protective Mask , Refrigerator/Freezer portable	0	0	0	0
Storage Box slide-out, upper shelf & fold-down door			0	0
Step Ladder folding			0	0

SYSTEMS

	S	S	S	S
Automotive Heater/AC , Aux. Start Circuit , Batteries (3) (coach) deep-cycle, Battery (chassis) disconnect system manual, Battery Charge Control automatic dual, Central Air Heat Pump , Drain 1 1/2" water tank, Electrical Distribution System AC & DC breaker panels, Furnace 40,000 BTU low-profile, primary, Generator 7,500-watt, Onan® Quiet Diesel®, Generator/Shoreline Automatic Changeover Switch , Converter/Inverter/Charger DC/AC, 2,000-watt w/remote panel, OnePlace systems center, wall-mounted, PowerLine energy management display, battery digital voltmeter, courtesy light, generator hourmeter gauge, generator start/stop switch, heating and A/C thermostat, holding tank levels, LP tank level, solar panel/battery charger light, water heater switch, water heater on light & pilot indicator light, water pump switch, water tank level, Power Cord 50-amp., superflex, Service Center (drainage/water) drainage valves, holding tank flushing system, city water hookup/tank diverter fill, drain for freshwater system, exterior wash station w/pump switch, soap dispenser, QuickPort service connection hatch, paper towel holder, portable satellite hookup, 10' sewer hose w/QuickConnect coupling valve, Service Center (electrical) cable inputs, power cord, QuickPort service connection hatch, shoreline/generator automatic changeover switch, telephone input, Solar Panel 10-watt battery charger, Tank flushing system, black tank only, Tank holding, heated compartment, Tank LP, permanent mount w/gauge, TrueAir residential central air conditioning system, TrueLevel holding tank monitoring system, Water Heater 10-gallon electronic ignition, LP gas/120 VAC w/motoraid, Water System Winterization Package water heater bypass valve & siphon tube, Water Hookup city, Water Pump demand, Washer/Dryer Prep , Water Tank Fill pressurized city hookup w/diverter valve, Water Tank Fill Door locking, gravity	S	S	S	S
Furnace 25,000 BTU, low-profile, secondary			S	S
Vacuum Cleaner central, Dirt Devil®, Washer/Dryer Combination	O	O	O	O

SLIDEOUTS

			S	
Slideout Room rear (vanity/chest of drawers) w/slidoor cover, Slideout Room front (TV/dining/refrigerator) w/slidoor cover, StoreMore			S	
Slideout Room rear (bed) w/slidoor cover	S		S	S
Slideout Room rear (wardrobe) w/slidoor cover, Slideout Room front (refrigerator/dining) w/slidoor cover, StoreMore		S		
Slideout Room front (sofa/galley) w/slidoor cover, StoreMore		S	S	
Slideout Room front (sofa/dinette) w/slidoor cover, StoreMore				S
Slideout Room front (sofa/lounge) w/slidoor cover, StoreMore		S		
Slideout Room front (lounge/galley) w/slidoor cover, StoreMore				S
Slideout Room front (breakfast bar/galley) w/slidoor cover, StoreMore	S			

SAFETY

	S	S	S	S
Assist Bar(s) interior, Assist Handle exterior, acrylic, Bumpers front & rear, Child-Seat Tether Anchor , Detectors/Alarms LP leak, smoke, carbon monoxide, Fire Extinguisher 10 BC, Ground Fault Interrupter , Light high-mount brakelamp(s), Lights daytime running, Light(s) courtesy w/wall switch(es), Seat Belts cab, 3-point, Seat Belts lap (in selected areas), Window escape , Windshield laminated safety glass	S	S	S	S

WARRANTY^b

	S	S	S	S
12-month/15,000-mile basic limited warranty^a, 36-month/36,000-mile warranty on structure^a, 10-year limited parts & labor warranty on roof skin^a	S	S	S	S

f Actual towing capacity is dependent on your particular loading and towing circumstances, which includes the GVWR, GAWR and GCWR as well as adequate trailer brakes. Please refer to the Operator's Manual of your vehicle for further towing information.
 g See separate chassis warranty details provided in Owner's Manual.
 h See your dealer for complete warranty information.
 Not all items available in combination. See dealer for details.
 Winnebago Industries® continuing program of product improvement makes specifications, equipment, model availability, and prices subject to change without notice. Comparisons to other motor homes are based on the most recent information available.

NOT ALL MOTOR HOMES ARE CREATED EQUAL. As you take a closer look, you'll see that there is much more to the Winnebago Tour than a long list of standard features and compelling floorplans. Beneath it all you'll find a SuperStructure® foundation of strength and durability, and Winnebago Industries' recognized service and warranty support.



We are committed to service. We back our motor homes with the best after-the-sale service in the industry. This includes a 12-month/15,000-mile basic limited warranty; 36-month/36,000-mile warranty on structure; standard 10-year limited parts-and-labor roof skin warranty; and complimentary 24-hour Roadside Assistance Program. TripSaver Fast Track Parts guarantees that in-stock warranty parts ship directly to your dealer within 24 hours. Winnebago Industries has a nationwide dealer service network.



Certified quality. Recreation Vehicle Dealer Association members annually rate RV manufacturers on the quality of their products, and on their sales and service support. Winnebago Industries has achieved the coveted Quality Circle Award every year since its inception, the only RV manufacturer to do so.



Warning: Joining WIT has been known to cause excessive fun. Winnebago-Itasca Travelers (WIT) is a club for owners of Winnebago Industries motor homes. WIT is a great way to meet people and offers you caravans and rallies, local and state group activities, and other benefits for RVers.

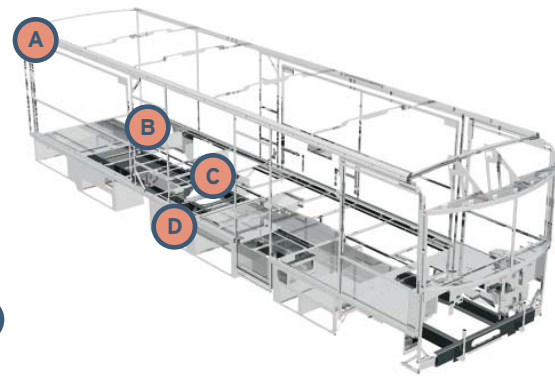


Seat belts are your most important hookup. Always buckle up.

NYSE listing: WGO

Visit www.winnebagoind.com for virtual product tours and the latest product updates.

©2005 Winnebago Industries Inc., Forest City, IA 50436. Printed in USA.



SUPERSTRUCTURE is the term given to Winnebago Industries' structural motor home design and construction. Rather than a single component, it is the culmination of design integration that incorporates steel and aluminum substructures; welded tubular steel floor risers; interlocking joint technology; and Thermo-Panel® floor, roof and sidewalls to form a high-strength, durable vehicle body.

Thermo-Panel manufacturing combines a durable exterior panel with welded aluminum support substructures. The substructures are embedded in a high-density, block-foam insulation core to create a strong, durable, yet lightweight sidewall. Just another Winnebago Industries invention.

The all-steel cab features integral A and B pillars for added strength and stability. Steel also separates the occupants from the engine compartment. Believe it or not, less advanced designs may use wood in this critical application.

- A** Interlocking joint construction utilizes advanced extruded aluminum structural components to create integrated floor-to-sidewall and sidewall-to-roof joints. This design effectively distributes the weight of the walls and roof, making a stronger and more durable body than competitor designs that rely on screws to carry the weight.
- B** The foundation substructure assembly is precision-aligned to maximize strength and cross-coach support as well as durability.
- C** Tubular steel risers feature a truss-design core for improved strength and provide a stable base for the floor structure and storage compartments.
- D** Critical steel components are treated using an advanced electrodeposition coating process that provides superior corrosion protection.

One-year-old Winnebago Industries' fiberglass roof



One-year-old competitor's rubber roof



BUILT TO A HIGHER STANDARD.

The Tour features a crowned, one-piece fiberglass roof skin backed with a 10-year limited parts-and-labor roof skin warranty. Fiberglass offers superior strength, attractiveness and durability compared to rubber roofs found on many competitive models. Over time, rubber roofs are susceptible to chalking, streaking and degradation, and have less puncture and tear resistance than fiberglass.