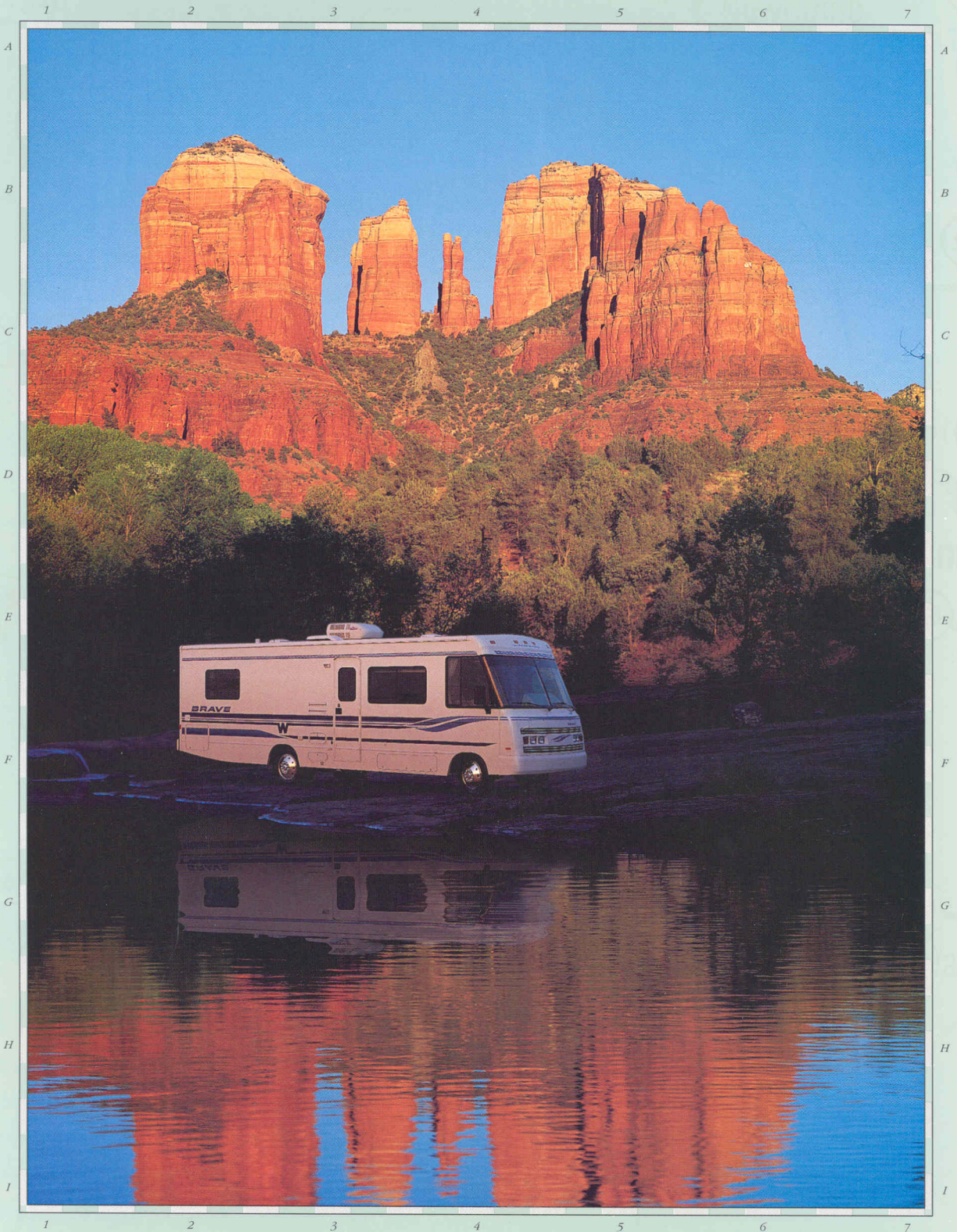


Winnebago Brave



The best way to turn a summer full of weekends into a lifetime of memories.



32RQ

If the work side of your life seems to be taking over the play side, maybe it's time you looked into a Winnebago Brave®. This is one motor home that not only provides you with a beautiful excuse to fill up your free time, it does so at a price you won't have to work overtime to pay.

Whether you have a week or just a weekend, no motor home gives you more ways to make the most of it. From the efficiently designed cockpit to the spacious available floorplans, the Brave puts both drivability and livability into a surprisingly affordable package.

And for those who appreciate the value of cutting edge construction, the Brave is unmistakably Winnebago—as solid as a motor home comes. From its sleek fiberglass skin to its rugged steel substructure. Maybe that's why it has one of the highest resale values in its class.



"WE DIDN'T KNOW EXACTLY WHERE WE WERE, BUT IT DIDN'T REALLY MATTER.

IT WAS SOMEPLACE OVERLOOKING THE GULF OF CALIFORNIA SOUTH OF SONORA,

MEXICO. WE PULLED OUR BRAVE A SHORT WAY OFF THE ROAD AND PICKED A

SITE BESIDE THE BEACH JUST IN TIME TO WATCH THE SUN DIP BENEATH THE HILLS

TO THE WEST. BOB GOT UP THE NEXT MORNING, STARTED THE COFFEE AND

TURNED THE COACH AROUND IN TIME FOR US TO CATCH THE SUNRISE THROUGH

THE DINETTE WINDOWS."

No other motor home has such an enormous capacity for fun.



1 2 3 4 5 6 7 8 9 10 11

1 2 3 4 5 6 7 8 9 10 11

29RQ

Like a friend who's always ready to share an adventure, the Winnebago Brave is always ready to go where the action is. From the ground up, it's designed with an active lifestyle in mind. It has the power to tow a boat with ease. It has the capacity to store

all the recreational gear for an entire family. And it can take you as far away from civilization as you want to go without forcing you to rough it.

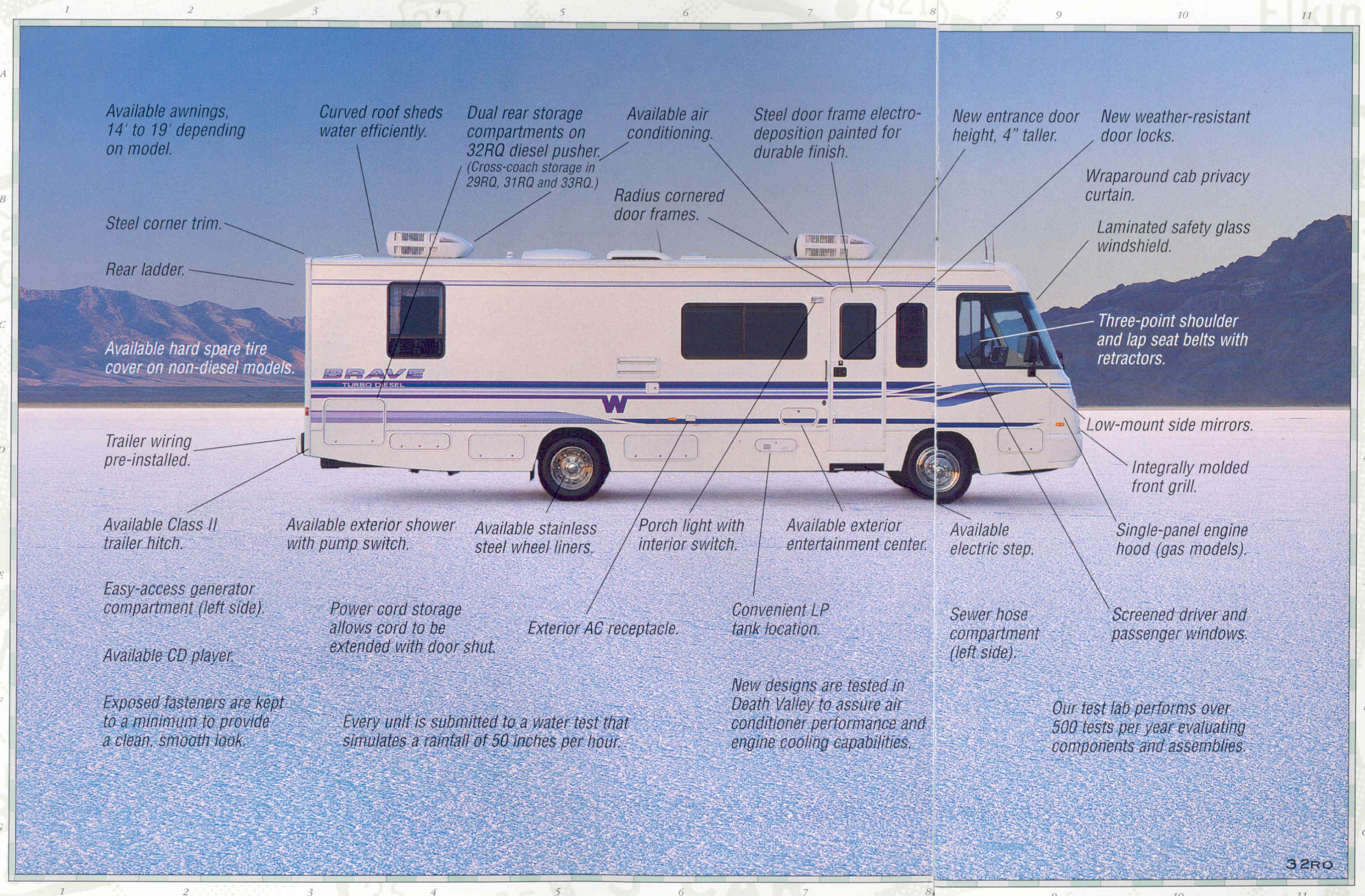
The Brave's interior is designed to be lived in. You'll notice it in things like fabrics and

carpeting that are chosen for durability as well as appearance. You can feel it in the handcrafted cabinetry that's built to hold up to years of use. And in the bedroom, you'll find total comfort and sensible storage space are combined without sacrificing either.



"PANNING FOR ARIZONA GOLD ISN'T EXACTLY THE MOST CHALLENGING OF ACTIVITIES, BUT ZACH THOUGHT IT WAS COOL. SO I SPENT A LITTLE WHILE GETTING HIM STARTED. THEN, ONCE HE HAD THE HANG OF IT, I JUST CLIMBED UP OUT OF THE STREAM AND INTO THE BRAVE. FROM THE SOFA, BARB AND I COULD KEEP AN EYE ON HIM OUT THERE. HE WAS SO ABSORBED HE NEVER EVEN SAW A MULE DEER THAT DRANK FROM THE STREAM JUST A FEW YARDS AWAY."

We made room for everything except compromise.



Available awnings, 14' to 19' depending on model.

Curved roof sheds water efficiently.

Dual rear storage compartments on 32RQ diesel pusher. (Cross-coach storage in 29RQ, 31RQ and 33RQ.)

Available air conditioning.

Steel door frame electro-deposition painted for durable finish.

New entrance door height, 4" taller.

New weather-resistant door locks.

Steel corner trim.

Rear ladder.

Available hard spare tire cover on non-diesel models.

Radius cornered door frames.

Wraparound cab privacy curtain.

Laminated safety glass windshield.

Three-point shoulder and lap seat belts with retractors.

Trailer wiring pre-installed.

Available Class II trailer hitch.

Available exterior shower with pump switch.

Available stainless steel wheel liners.

Porch light with interior switch.

Available exterior entertainment center.

Available electric step.

Low-mount side mirrors.

Integrally molded front grill.

Single-panel engine hood (gas models).

Easy-access generator compartment (left side).

Power cord storage allows cord to be extended with door shut.

Exterior AC receptacle.

Convenient LP tank location.

Sewer hose compartment (left side).

Screened driver and passenger windows.

Available CD player.

Exposed fasteners are kept to a minimum to provide a clean, smooth look.

Every unit is submitted to a water test that simulates a rainfall of 50 inches per hour.

New designs are tested in Death Valley to assure air conditioner performance and engine cooling capabilities.

Our test lab performs over 500 tests per year evaluating components and assemblies.

32RQ

1
2
3
4
A Winnebago motor home is built around more than just a steel and aluminum frame. It's built around a philosophy that you'll find in every model: Integrity.

At Winnebago Industries, we take quality into our own hands, by building most components to our own demanding

5
6
7
8
specifications rather than buying them from outside suppliers. And when we're faced with important decisions, we listen to motor homers to make sure we're including the qualities they most want.

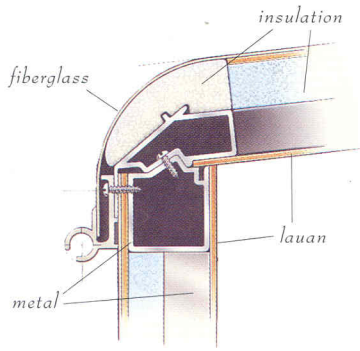
The result is a motor home that takes maximum advantage of every available

9
10
11
inch of living space in a floorplan you can enjoy and appreciate for years. And it's all integrated in a way that never compromises safety, reliability and durability.

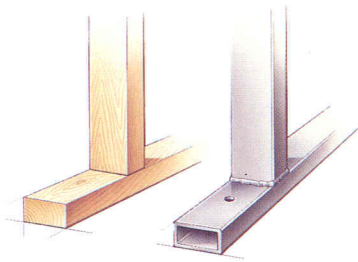
There may be easier ways to build a motor home. But there's no better way.



"I'D NEVER BEEN TO A STOCK CAR RACE BEFORE. STILL, I WAS MORE THAN HAPPY TO LET MY WINNEBAGO BRAVE BECOME CENTRAL HEADQUARTERS FOR A WEEKEND OF WILD NASCAR ACTION WITH THREE OF MY BUDDIES IN NORTH CAROLINA. WE FOUND A NICE SPOT IN THE INFIELD RIGHT ALONG TURN THREE AND SPENT THE BETTER PART OF TWO DAYS JOCKEYING FOR POSITION. NEXT YEAR I'LL THINK TO BRING MORE THAN JUST ONE LAWN CHAIR."



The design of the jointing system is crucial for strengthening places where the roof, sidewalls and floor meet. Three steel tubes go through the roof and attach to the sideframe. The floor joint locks into place so the weight of the wall rests on the steel floor substructure. Our unique jointing system has been imitated, but only ours stands up to our rigorous testing standards.



Believe it or not, some motor homes still use wood in their substructures. But each Winnebago motor home has a steel substructure for maximum strength and protection. It improves everything from the durability of your motor home to the way it handles. And that's the kind of solid feeling that's good to have after you've put a few miles behind you.



Make a quick snack or prepare a full meal in the Brave's roomy, functional galley. All the necessities are standard, including a double stainless steel sink, microwave, range, range hood and double-door refrigerator/freezer.



An available six-way adjustable driver's seat is one of the ways the Brave's cockpit exceeds your expectations.



An available AM/FM/stereo and compact disc player gives you the convenience and clarity of compact discs on the road.



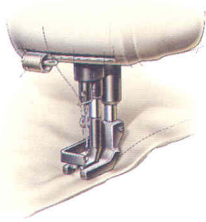
Stretch out and relax after a day on the road in this spacious, open floorplan, or choose another option that fits you best. The Brave's many floorplan and furnishing combinations will help you find the interior that's perfect for you.



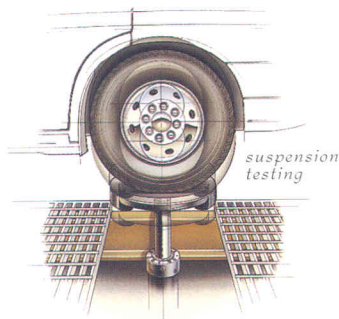
The television entertainment center has an available remote-controlled 13" color TV and VCR plus remote speakers. Tinted glass doors cover the VCR, switching system and room for tapes. Below, the low-profile dash, low-mounted wipers and large windows give you an unparalleled view.



"THE ONE THING OUR WINNEBAGO BRAVE DOESN'T HAVE IS A SWIMMING POOL. SO WHEN MY WIFE'S BROTHER CALLED US FROM OREGON AND SAID TO COME ON OUT WITH OUR SWIMSUITS, WE WERE ON OUR WAY THE NEXT MORNING. SURE, WE COULD'VE TAKEN THE CAR, BUT THE BRAVE IS SUCH A RELAXING WAY TO GO. MY BROTHER-IN-LAW HAD PUT THIS BIG NEW SWIMMING POOL IN. I DID A FEW CANNONBALLS IN THE DEEP END, BUT MOSTLY WE JUST FLOATED AROUND ENJOYING THE VISIT."



The beauty of your motor home is more than skin deep. We choose fabrics for their strength and durability, and we coordinate interior fabrics, carpet and accent colors throughout. We have our own facility that fabricates and installs all our sofas, lounge chairs, seats and draperies as well as items like bedspreads and headboards. This lets us create unique and versatile interiors.



Our manufacturing process includes more safety checks, quality inspections and product testing than any other motor home builder. New designs are tested by computer, then subjected to our punishing on-site test track. And every single motor home that leaves our factory undergoes a systematic performance inspection of major systems, components and fit and finish.



No matter how far you go to get away from it all, it's still nice to take your private retreat with you. And the bedroom in your Brave surrounds you with comfort and convenience, from the decorative lamps to the ample wardrobe space.



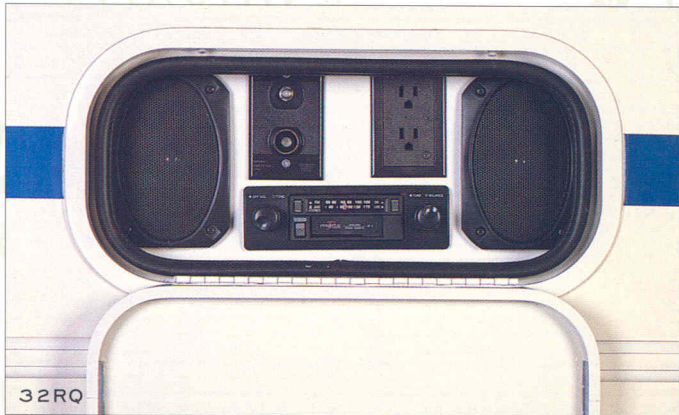
This bathtub with sliding glass door lets you enjoy a leisurely soak after a round of golf or hike in the woods (32RQ only).



There's plenty of room and lots of light in this spacious split bathroom. Most Brave floorplans also feature a full-length mirrored wardrobe.



Attention to detail is what sets a Winnebago apart. Weather-sealed storage with durable edge-to-edge lining keeps your important belongings clean and protected behind secure, locking doors.



The available patio entertainment center has an AM/FM radio cassette deck with two speakers plus a TV jack and radio antenna.



Hot or cold running water in a hand-held shower head is ready for quick cleanups in this exterior wash station.



"THE LURE OF POUNDING SURF AND UNLIMITED FRESH LOBSTER BROUGHT US TO ACADIA NATIONAL PARK IN MAINE. WE PARKED OUR BRAVE ON AN OCEANFRONT SITE WHERE WE COULD WATCH THE CRASHING WAVES AND ENJOY THE SEA BREEZE. THEN WE UNLOADED OUR BIKES AND WENT RIDING ON TRAILS THAT WERE ONCE CARRIAGE ROADS FOR JOHN D. ROCKEFELLER'S SUMMER ESTATE. BEFORE LONG, WE WORKED UP AN APPETITE FOR OUR FIRST STEAMING PLATE OF LOBSTER AND CORN ON THE COB."

Winnebago Brave Specifications

	23RC	27RQ	28RC	29RQ	31RQ	32RQ	33RQ
1995 BRAVE							
Length	23'	27'	27'10"	29'7"	31'5"	32'	33'10"
Ext. Height w/Roof Air - Chevrolet†	10'9.5"	10'11"	10'10"	11'2.5"	10'11.5"	NA	11'5.5"
Ext. Height w/Roof Air - Chevrolet Optional†	NA	NA	NA	10'10.5"	NA	NA	10'11"
Exterior Height w/Roof Air - Ford†	NA	NA	NA	11'5"	11'	NA	10'10.5"
Exterior Height w/Roof Air - Oshkosh†	NA	NA	NA	NA	NA	TBD	NA
Exterior Width	8'	8'	8'	8'	8'	8'	8'
Interior Height	6'8"	6'8"	6'8"	6'8"	6'8"	6'8"	6'8"
Interior Width	7'7"	7'7"	7'7"	7'7"	7'7"	7'7"	7'7"
Exterior Storage	37.3 cu. ft.	52.2 cu. ft.	47.1 cu. ft.	73.8 cu. ft.	76.6 cu. ft.	TBD	83.6 cu. ft.
Fuel Capacity - Chevrolet	40 gal.	60 gal.	60 gal.	78 gal.	78 gal.	NA	78 gal.
Fuel Capacity - Ford	NA	NA	NA	75 gal.	75 gal.	NA	75 gal.
Fuel Capacity - Oshkosh	NA	NA	NA	NA	NA	90 gal.	NA
Fresh Water Capacity w/Heater	49 gal.	55 gal.	60 gal.	55 gal.	55 gal.	63 gal.	55 gal.
Holding Tank Capacities	60 gal.	72 gal.	75 gal.	67 gal.	75 gal.	62 gal.	81 gal.
LP Capacity	60 lbs.	60 lbs.	60 lbs.	60 lbs.	100 lbs.	130 lbs.	100 lbs.
GVWR - Chevrolet Standard	12,300 lbs.	12,300 lbs.	14,800 lbs.	14,800 lbs.	14,800 lbs.	NA	14,800 lbs.
GVWR - Chevrolet Optional	NA	NA	NA	16,000 lbs.	NA	NA	16,000 lbs.
GVWR - Chevrolet Diesel Optional	12,300 lbs.	14,800 lbs.	14,800 lbs.	14,800 lbs.	14,800 lbs.	NA	NA
GVWR - Ford Optional	NA	NA	NA	15,200 lbs.	15,200 lbs.	NA	17,000 lbs.
GVWR - Oshkosh Standard (Rear Pusher)	NA	NA	NA	NA	NA	17,000 lbs.	NA
Wheelbase	137"	158.5"	158.5"	178"	190"	178"	208"

	23RC	27RQ	28RC	29RQ	31RQ	32RQ	33RQ
AUTOMOTIVE							
Chassis - Chevrolet - 7.4L 454 V-8 Fuel-Injected Gasoline Engine, Automatic Transmission w/Overdrive & Cooler, Front Suspension: Gas, Rear Suspension: Leaf Spring, 630-CCA Battery/105-Amp. Alternator	●	●	●	●	●	●	●
Chassis - Chevrolet - 6.5L Diesel Engine, Automatic Transmission w/Overdrive & Cooler, Front Suspension: Gas, Rear Suspension: Leaf Spring, 630-CCA Battery/105-Amp. Alternator	○	○	○	○	○	○	○
Chassis - Ford - 7.5L 460 V-8 Fuel-Injected Gasoline Engine, Automatic Transmission w/Overdrive & Cooler, Front Suspension: Mono-Beam Axle w/Leaf Spring, Rear Suspension: Multi-Leaf Spring, 650-CCA Battery/130-Amp. Alternator				○	○		○
Chassis - Oshkosh - 5.9L 190-HP Cummins Turbo-Charged, After-Cooled, Rear Diesel Engine, Automatic Transmission w/Cooler, 950-CCA Battery/100-Amp. Alternator							●
Air Flow Indicator							●
Engine Block Heater							●
Fuel/Water Separator							●
Shocks (Gas) - Front, Chevrolet	○	○	○	○	○	○	○
Springs (Air) - Rear Auxiliary, Chevrolet	○	●					
Tires (Radial) - w/Spare	●	●	●	●	●	●	●
DRIVER CONVENIENCES							
Battery Charge Control - Dual, Automatic	●	●	●	●	●	●	●
Battery Disconnect - Auxiliary	○	○	○	○	○	○	○
Center Console Cabinet							●
Cruise Control	●	●	●	●	●	●	●
Curtain w/Track - Front Wrap-Around	●	●	●	●	●	●	●
Floor Mats - Carpeted							●
Heating/Air Conditioning - Automotive Blend Air System	●	●	●	●	●	●	●
Hood Release - Exterior Key Locks	●	●	●	●	●	●	●
Map Light	●	●	●	●	●	●	●
ENTERTAINMENT							
Map Pockets							●
Mirrors (Rear View) - Low Mounted, Include Convex Element	●	●	●	●	●	●	●
Seat - Six-Way Manual Adjust Driver's Seat	○	○	○	○	○	○	○
Seats w/3-Point Retracting Seat Belts, - Reclining High-Back Design, Hinged Armrests, Lumbar Support, Swivel/Slide Pedestal	●	●	●	●	●	●	●
Start Circuit - Auxiliary	●	●	●	●	●	●	●
Steering - Power Assisted w/Tilt Wheel	●	●	●	●	●	●	●
Storage Shelf - (Overhead)	●	●	●	●	●	●	●
Upgrade - Driver's Convenience Package - Map Pockets, Convenience Tray w/Beverage Holders & Ashtray, Carpeted Floor Mats	○	○	○	○	○	○	○
Windows - Sliding, w/Screens	●	●	●	●	●	●	●
Windshield Wipers (Intermittent)	●	●	●	●	●	●	●
ENTERTAINMENT							
Entertainment Center (Patio)* - DC Receptacle, 110-V outlet, TV Jack, Radio Antenna, AM/FM Radio Cassette, Speakers (2), TV Table, Locking Door	○	○	○	○	○	○	○
Inverter - 110-V for TV/VCR	○	○	○	○	○	○	○
Stereo Power Switch - For Main Or Auxiliary Battery Use	●	●	●	●	●	●	●
Stereo w/Digital Clock (Cab) - Electronic Tune AM/FM/Cassette Deck w/Speakers (4), Roof-Mounted Flexible Rubber Antenna	●	●	●	●	●	●	●
Stereo w/CD Player (Cab) - Electronic Tune AM/FM w/Speakers (4), Roof-Mounted Flexible Rubber Antenna	○	○	○	○	○	○	○
TV* (9" Color) w/Remote - Located in Bedroom	○	○	○	○	○	○	○
TV* (13" Color) w/Remote - Cabinet Exchange	○	○	○	○	○	○	○
TV* (13" Color) & VCR w/Remotes - Switching System, Cabinet Exchange	○	○	○	○	○	○	○
TV Enhancement Package - Required w/Some Options, Antenna (Amplified), DC Receptacles (2), Interior Jacks (2), Coax Wiring, Cable Input, Exterior Antenna Jack, TV Shelf, Stand or Cabinet	○	○	○	○	○	○	○

- Standard
- Optional

- Standard
- Optional

- Standard
- Optional

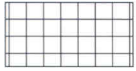
	23RC	27RQ	28RC	29RQ	31RQ	32RQ	33RQ
INTERIOR							
Bed (Front Overhead)*	○	○	○	○	○	○	○
Cabinets – Wood-Framed Doors w/Brass & Inserts	●	●	●	●	●	●	●
Carpeting w/Pad – Stain Resistant w/Scotchgard™	●	●	●	●	●	●	●
Ceiling – Padded Vinyl Headliner	●	●	●	●	●	●	●
Ceiling Lights	●	●	●	●	●	●	●
Ceiling Vent – Non-Powered, Lounge	●	●	●	●	●	●	●
Ceiling Vent – Non-Powered, Galley	●	●	●	●	●	●	●
Ceiling Vent – Non-Powered, Bedroom	●	●	●	●	●	●	●
Ceiling Vent – Powered, Bathroom	●	●	●	●	●	●	●
Clock – Decorator Style	●	●	●	●	●	●	●
Divider – Curtain	●						
Divider – Folding Door		●				●	
Divider – Hinged Door			●				
Divider – Sliding Door					●		●
Lamp – Decorator Style, Wall-Mounted in Lounge		●	●			●	
Windows – Tinted	●	●	●	●	●	●	●
Windows – Dual Glazed, Thermo-Insulated	○	○	○	○	○	○	○
GALLEY							
Coffee Maker	○	○	○	○	○	○	○
Counter Extension – Flip-Up	●						●
Flooring (Vinyl)	○	○	○	○	○	○	○
Galley Rail			●	●	●	●	●
Microwave Oven	●	●	●	●	●	●	●
Mirror – Wall-Mounted in Dining Area	●	●			●	●	●
Pantry		●	●			●	●
Range Hood – w/Light, Powered Vent	●	●	●	●	●	●	●
Range w/Oven – 3 Burners, 1 High Output	●	●	●	●	●	●	●
Refrigerator/Freezer – Double-Door	●	●	●	●	●	●	●
Sink (Double) – Stainless Steel, Recessed w/Countertop Cover, Dual Control Faucet	●	●	●	●	●	●	●
Storage – Below Dinette Seat	●	●	●	●	●	●	●
BEDROOM							
Bedsprad(s), Pillows, Pillow Shams	●	●	●	●	●	●	●
Lamp(s) – Decorator Style, Wall-Mounted		●					
Wardrobe – Mirrored Doors (NA 28RC), Carpeted Floor, Drawers (NA on 27RQ & 33RQ), Upper Shelf (NA On 23RC, 27RQ, 28RC)	●	●	●	●	●	●	●
BATHROOM							
Flooring* (Vinyl) – Only Available in Combination w/Galley Vinyl Flooring on 29RQ	●	●	●	○	●	●	●
Linen Cabinet		●			●	●	●
Makeup Lights/Medicine Cabinet	●	●	●	●	●	●	●
Mirrors (2) – Wall-Mounted, Single Mirror on 27RQ & 32RQ		●			●	●	●
Shower – Flexible Shower Head, Molded Single-Piece Walls	●	●	●	●	●	●	●
Shower/Tub – Flexible Shower Head						●	
Shower Curtain	●	●	●	●			
Shower Doors – (Glass)					●	●	●
Sink – Rectangular, Molded Soap Dishes	●	●	●	●	●	●	●
Sink – Large Oval, Ledge Back				●		●	
Skylight – (Additional Skylight in 32RQ Bath Area)				●			
Toilet – Marine Style; and Tissue Holder	●	●	●	●	●	●	●
Towel Bar		●	●	●	●	●	●
Towel Rack (3) – Built into Door	●	●	●	●	●	●	●
Towel Ring	●		●	●		●	
EXTERIOR							
Awning Rail	●	●	●	●	●	●	●

- Standard
- Optional

	23RC	27RQ	28RC	29RQ	31RQ	32RQ	33RQ
Awning*							
Bumpers – Rustproof, Front: Steel Reinforced Molded Plastic, Rear: Formed Aluminum w/End Caps	●	●	●	●	●	●	●
Entrance Door Locks (2) – Latch, Deadbolt	●	●	●	●	●	●	●
Entrance Door Step (Manual)	●	●	●	●	●	●	●
Entrance Door Step (Electric) – w/Door Jamb Switch	○	○	○	○	○	●	○
Ladder	●	●	●	●	●	●	●
Outlet – 110-V, Curbside	●	●	●	●	●	●	●
Screen Door and Porch Light – Interior Switch	●	●	●	●	●	●	●
Sewer Hose & Storage Compartment	●	●	●	●	●	●	●
Shower – Pullout w/Water Pump Switch	○	○	○	○	○	○	○
Storage Compartments – Floor Lining, Steel Construction	●	●	●	●	●	●	●
Tire Tools – Wrench, Leverage Bar	●	●	●	●	●	●	●
Trailer Towing Package w/Class II Hitch	○	○	○	○	○	○	○
Undercoating	○	○	○	○	○	○	○
Upgrade - Trim Package – Deluxe Mirrors, Hard Cover for Spare, Rear Mud Flaps	○	○	○	○	○	○	○
Water Hook-up and Water Fill Door – Lockable	●	●	●	●	●	●	●
Wheel Covers	●	●	●	●	●	●	●
Wheel Liners – Stainless Steel	○	○	○	○	○	○	○
SYSTEMS							
Air Conditioning Pre-Wiring – Roof	●	●	●	●	●	●	●
Air-Conditioner – Roof, 13,500-BTU	○	○	○				
Air-Conditioner – Roof, 14,800-BTU					○	○	○
Air-Conditioners* – Roof, Front/Rear: 13,500/13,500-BTU					○	○	○
Batteries (2) – Deep Cycle RV, in Stepwell Compartment	●	●	●	●	●	●	●
Electrical Control Center – 110-V AC/12-V DC, 9-Amp. Batt. Charger, 45-Amp. Converter (32-Amp. on 23RC), DC Fuses, AC Breakers, 30-Amp. Power Cord	●	●	●	●	●	●	●
Furnace – Ducted, Low Profile, Electronic Ignition:							
25,000-BTU	●	●	●				
30,000-BTU		○	○	●	●	●	●
35,000-BTU					○	○	○
Furnace Ducting System – Flexible, above Floor	●	●	●	●	●	●	●
Generator Prep Kit – Fuel Line, 12-V Wiring (LPG Line 32RQ)	●	●	●	●	●	●	●
Generator* – 4,000-Watt	○	○	○	○	○	○	○
Generator* – 5,000 or 6,500-Watt (6,500-Watt Only 32RQ)					○	○	○
LP Tank – Permanent Mount w/Gauge	●	●	●	●	●	●	●
Monitor Panel – Water, Holding & LP Tank Levels, Battery Condition Gauge, Water Heater Ignition Switch w/Pilot Indicator Light, Water Pump Switch, Located in Galley	●	●	●	●	●	●	●
Water Heater – 6-gal, Electronic Ignition	●	●	●	●	●	●	●
Water Heater (Motoraid) & Rear Automotive Heater	○	○	○	○	○	○	○
Water Heater Winterization By-Pass Valve	○	○	○	○	○	○	○
Water Pump (Demand) – 2 Switches, Interior Access	●	●	●	●	●	●	●
SAFETY							
Assist Handle – Interior		●	●	●	●	●	●
Assist Strap – Interior	●	●	●	●	●	●	●
Assist Handle – Exterior	●	●	●	●	●	●	●
Carbon Monoxide Detector/Alarm	●	●	●	●	●	●	●
Fire Extinguisher (10-B.C.)	●	●	●	●	●	●	●
Ground Fault Interrupter	●	●	●	●	●	●	●
LP Leak Detector/Alarm	●	●	●	●	●	●	●
Smoke Detector/Alarm	●	●	●	●	●	●	●

*The height of each model is based on the curb weight of a typically equipped unit on the standard chassis. The actual height of your vehicle may vary by as much as 2" depending on chassis or equipment variations. **Not all options available in combinations. See dealer for details. Winnebago Industries' continuing program of product improvement makes specifications, equipment, model availability and prices subject to change without notice.

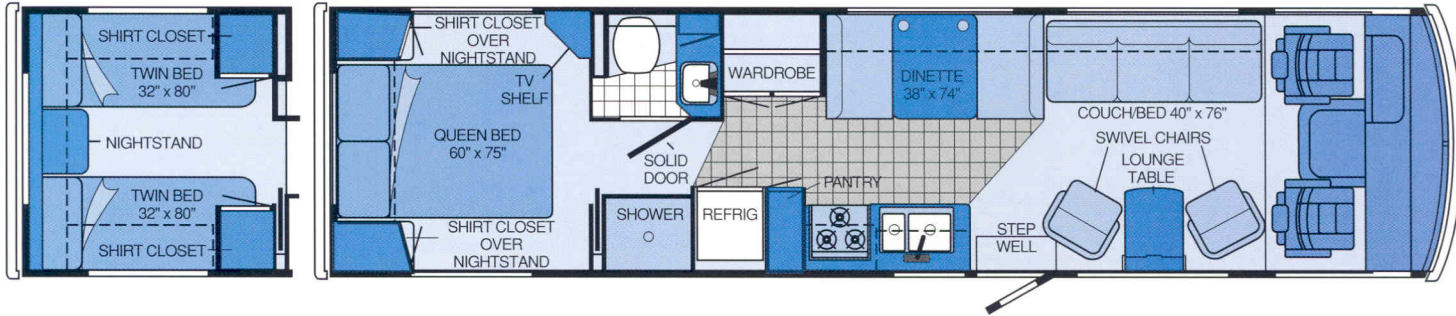
Choose from 17 floorplan combinations.



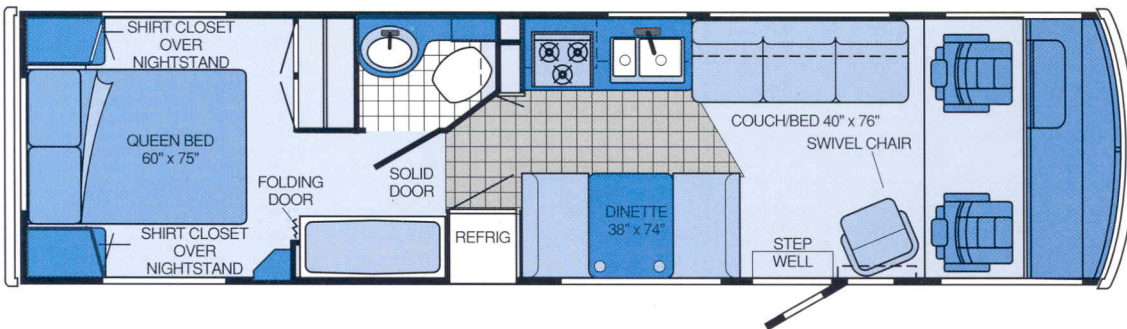
Standard Vinyl



Optional Vinyl



1995 BRAVE 33RQ			
Length	33'10"	Fuel Capacity - Ford	75 gal.
Exterior Width	8'	Fresh Water Capacity w/Heater	55 gal.
Interior Height	6'8"	Holding Tank Capacities	81 gal.
Interior Width	7'7"	LP Capacity	100 lbs.
Fuel Capacity - Chevrolet	78 gal.	Wheelbase	208"

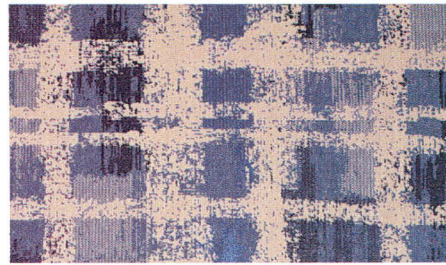


1995 BRAVE 32RQ			
Length	32'	Fresh Water Capacity w/Heater	63 gal.
Exterior Width	8'	Holding Tank Capacities	62 gal.
Interior Height	6'8"	LP Capacity	130 lbs.
Interior Width	7'7"	Wheelbase	178"
Fuel Capacity - Oshkosh	90 gal.		

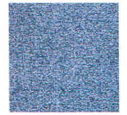
Choose the colors that match your spirit of adventure.



Bluegrass _____



Accent



Carpet



Sesame _____



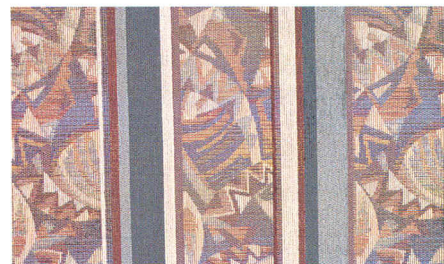
Accent



Carpet



Olive Branch _____



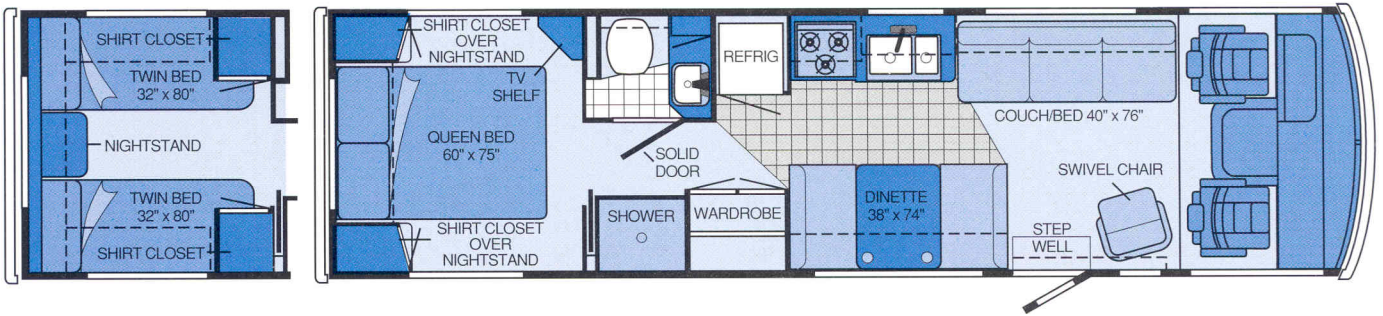
Accent



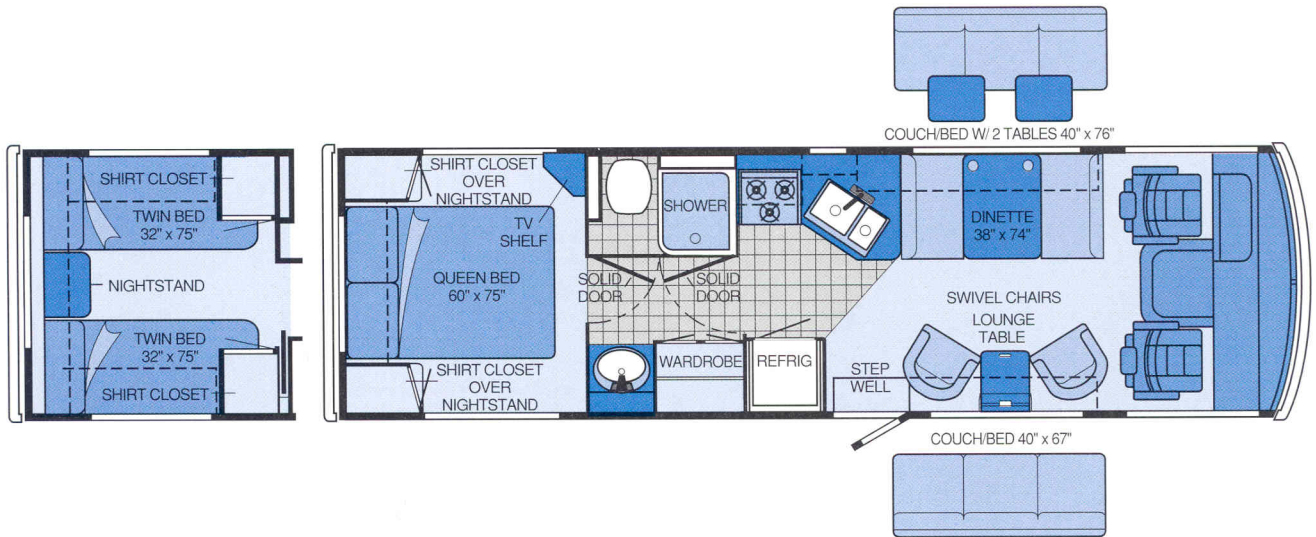
Carpet

No need to worry about spills. All upholstery and carpeting in Winnebago motor homes is protected against stains with Scotchgard™ Brand Soil Repellent. The 100% stain-resistant carpeting carries an extensive stain and wear warranty.

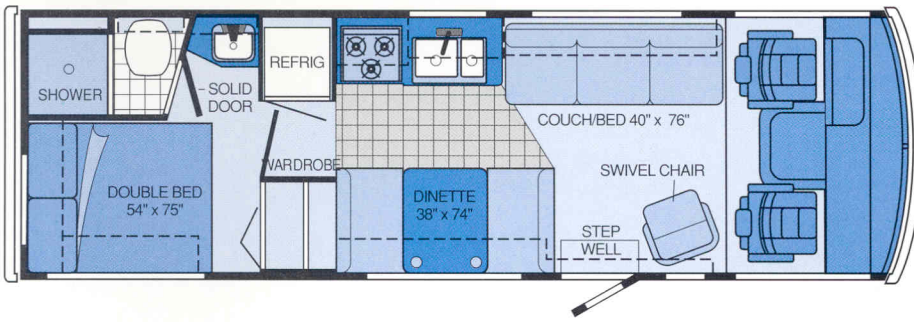




1995 BRAVE 31RQ			
Length	31'5"	Fuel Capacity - Ford	75 gal.
Exterior Width	8'	Fresh Water Capacity w/Heater	55 gal.
Interior Height	6'8"	Holding Tank Capacities	75 gal.
Interior Width	7'7"	LP Capacity	100 lbs.
Fuel Capacity - Chevrolet	78 gal.	Wheelbase	190"

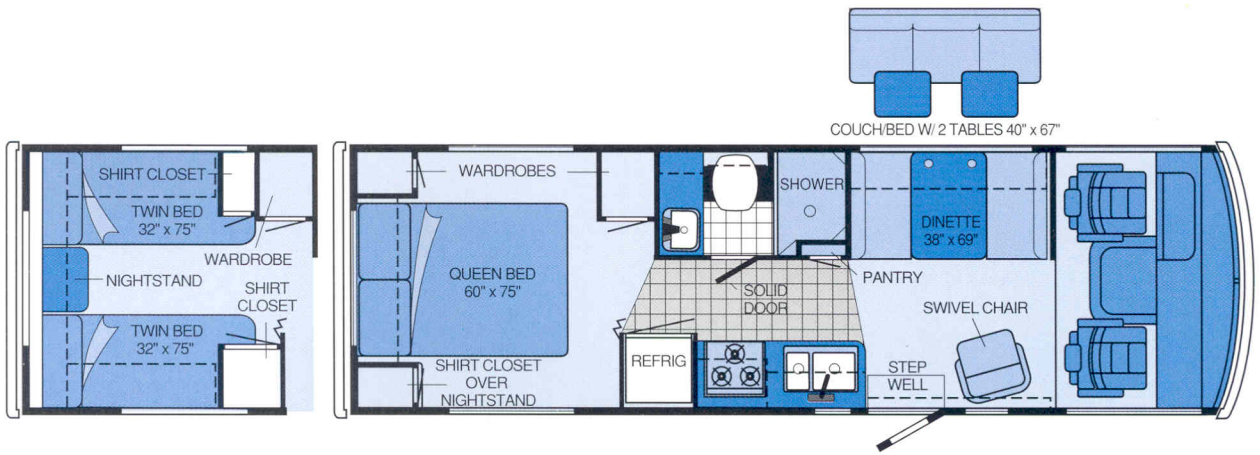


1995 BRAVE 29RQ			
Length	29'7"	Fuel Capacity - Ford	75 gal.
Exterior Width	8'	Fresh Water Capacity w/Heater	55 gal.
Interior Height	6'8"	Holding Tank Capacities	67 gal.
Interior Width	7'7"	LP Capacity	60 lbs.
Fuel Capacity - Chevrolet	78 gal.	Wheelbase	178"



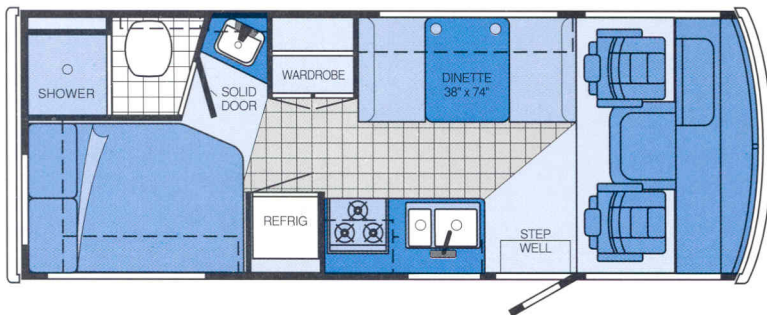
1995 BRAVE 28RC

Length	27'10"	Fresh Water Capacity w/Heater	60 gal.
Exterior Width	8'	Holding Tank Capacities	75 gal.
Interior Height	6'8"	LP Capacity	60 lbs.
Interior Width	7'7"	Wheelbase	158.5"
Fuel Capacity – Chevrolet	60 gal.		



1995 BRAVE 27RQ

Length	27'	Fresh Water Capacity w/Heater	55 gal.
Exterior Width	8'	Holding Tank Capacities	72 gal.
Interior Height	6'8"	LP Capacity	60 lbs.
Interior Width	7'7"	Wheelbase	158.5"
Fuel Capacity – Chevrolet	60 gal.		




1995 BRAVE 23RC

Length	23'	Fresh Water Capacity w/Heater	49 gal.
Exterior Width	8'	Holding Tank Capacities	60 gal.
Interior Height	6'8"	LP Capacity	60 lbs.
Interior Width	7'7"	Wheelbase	137"
Fuel Capacity – Chevrolet	40 gal.		



A Winnebago motor home is more than just a great investment. It's a ticket to a world of fun, camaraderie and support. Foremost is our Winnebago-Itasca Travelers (WIT) Club. The WIT Club lets you meet other Winnebago Industries motor home owners and access unique club services like professional trip routing and mail forwarding.

When you join the Winnebago Motorsports Team you'll be right at home at racing events across America. Winnebago has been designated the Official Motor Homes of  and is closely associated with several NHRA drag racing teams.



Also, a growing number of NASCAR and NHRA drivers are involved with the Winnebago Motorsports Team. Motorsports members enjoy many benefits including a quarterly newsletter, a racing merchandise catalog and the opportunity to participate in special on-track events at selected races.



Down the road, factory support is never far behind. Twenty-four-hour emergency road service pays for towing to a factory authorized dealer at no cost to you. With over 20,000 locations throughout North America, quality assistance is just a phone call away with our Preferred Care Program. Plus, our warranty program is one of the most comprehensive in the industry, starting with 12-month or 15,000-mile protection. In addition, structural components are covered for 36 months/36,000 miles. Furthermore, a 10-year limited warranty protects the roof and walls.

If you'd like to know more about Winnebago and our motor homes, we invite you to visit one of our outstanding dealers, or visit us at our headquarters in Forest City, Iowa. Just call us at (515) 582-3535 for a free factory tour.

