



Berkshire

BY FOREST RIVER MOTOR HOMES DIESEL DIVISION

YOUR LUXURY. YOUR DESTINATION.



Berkshire
BY FOREST RIVER MOTOR HOMES DIESEL DIVISION

Berkshire

T H E B E R K S H I R E

The Berkshire is all about luxury. Everything from the spacious wrap around cockpit to the king size bed, it has it all. From the moment you leave until the moment you arrive, you will enjoy each day in total comfort with the knowledge that Berkshire will get you there in style.



390BH: MOCHA INTERIOR. EXECUTIVE CHERRY WOOD. COCKPIT

- Wrap around cockpit w/ (9) gauge instrument cluster
- 4-Spoke VIP black steering wheel
- Telescopic/tilt steering wheel
- 6-Way flex-steel power driver seat w/ 360 degree swivel and recliner
- Rear vision camera w/ hide-a-way monitor
- Jensen AM/FM/CD player w/ time display
- (4) pt. fully automatic hydraulic leveling system
- Air and "city mode" horns
- Heated power side view mirrors
- (2) Defroster fans w/ high and low settings
- Driver/passenger map lights
- Side vision (standard)
- Power sun visors (standard)
- One piece power privacy shade (standard)

CHASSIS OPTIONS

340HP	660 ft lb	MH2500 Trans	5,000 lbs. Hitch	Wheel Simulators
360HP	800 ft lb	MH3000 Trans	10,000 lbs. Hitch	Aluminum Wheels



390RB: ONYX INTERIOR. EXECUTIVE CHERRY CABINETS.
BOOTH DINETTE.

B E R K S H I R E 3 6 0 F W S

Freshen up and relax in style in the bedroom/bathroom area of the 360 FWS. The overhead cabinets, 19" LCD TV and spacious feel give you everything you need while on the road. With enough room for storage, you never have to worry about clutter.



- Bedside wardrobe w/ shoe rack
- Dresser drawers and wardrobe type cabinets
- Optional combination washer/dryer (certain floor plans only)
- Overhead cabinets
- 19" LCD TV
- Fluorescent lighting
- Washer/dryer prep
- Night stands
- 72"X 80" king bed (standard on 360 FWS)



360FWS: ONYX INTERIOR. EXECUTIVE CHERRY WOOD.
SHOWN WITH STANDARD KING BED.

B E R K S H I R E 3 9 0 B H

Get a good night's sleep in the luxurious bedroom suite. The king size bed comes complete with bedspread and decorative pillow covers. The spacious wardrobe and convenient washer/dryer prep make your visits feel like home. And with the additional bunks, you can add more people to the guest list.



- (3) interior décor choices
- 84" interior ceiling height
- Soft touch padded ceiling
- LED lighting throughout
- Full length mirror
- 13,500 BTU low profile front roof A/C with heat pump and ceiling ducts with drain
- Fantastic Fans throughout
- Night shades
- Corian kitchen counter tops
- Twin sink basins with covers
- Wall border behind galley & sofa
- Full extension metal drawer guides w/ ball bearings throughout
- Optional solid wood, free standing dinette with 4 chairs
- Booth dinette w/ retractable table top & drawers underneath
- Hide-a-bed sofa
- Love seat sofa
- Contoured overhead cabinets in slide out rooms
- Optional dual pane, dark tint windows (including (2) exit windows)
- Standard side view cameras
- Standard power sun visors
- Standard power privacy shade



390BH: PEARL INTERIOR. EXECUTIVE CHERRY WOOD.
BOOTH DINETTE.

The Berkshire offers a wide range of standards and options with comfort, style and reliability in mind. Everything from the standard Cummins ISB turbo diesel engine to the optional natural maple cabinet doors. There is no shortage of choices when building your perfect escape.

- CHASSIS-FREIGHTLINER XC
RAISED RAIL CHASSIS:
ENGINE STANDARDS**
- Cummins ISB turbo diesel
 - 6.7 liter
 - 340 HP @ 1600 RPM
 - 660 ft. lbs. torque @ 1600 RPM

- BRAKES**
- Full air w/ auto slack adjuster
 - ABS
 - Exhaust brake
 - Telescopic/tilt steering wheel

- TRANSMISSION**
- Allison 2500MH
 - 6 Speed automatic w/ lock up
 - Electric push button shift
 - Transynd transmission fluid

- SUSPENSION**
- Neway air suspension front and rear
 - Sachs custom tuned shock absorbers
 - Heavy duty stabilizer bar
 - 55 degree wheel cut
 - I beam suspension w/ bell crank
 - Air suspension deflation system

- TIRES**
- Michelin XRV 255/80R/22.5

- WHEELS**
- (4) Stainless steel simulators

- COOLING SYSTEM**
- Cross flow, rear mounted radiator
 - Transmission oil cooler
 - 5 year / 100,000 mile coolant (some maintenance required)

- STEERING WHEEL**
- 4-Spoke VIP black steering wheel
 - Electronic cruise control w/ high idle
 - Telescopic/tilt steering wheel

- OTHER CHASSIS STANDARDS**
- 100 gallon, dual fill fuel tank
 - LCD engine message center
 - Day time running lights
 - 7-Pin tow power connector
 - 18.7 CFM air compressor
 - Farr Eco-air cleaner
 - Air filter restriction indicator
 - Fuel/water separator
 - Heated air dryer
 - Automatic, heated moisture ejectors
 - Power steering
 - Washer/wiper w/ intermittent function
 - 160 amp alternator
 - (2) 950 CCA @ 0° F, maintenance free batteries on slide tray

- CHASSIS OPTIONS**
- Cummins ISB turbo diesel
 - 6.7 liter
 - 360 HP @ 1800 RPM
 - 800 ft. lbs. torque @2600 RPM
 - Allison 3000MH 6-speed transmission
 - 10,000 lb. receiver hitch

- WHEELS OPTIONS**
- (4) Polished aluminum
 - (2) Steel on inside rear axle
 - 22.5 x 8.25

- STRUCTURAL STANDARDS**
- Steel basement construction
 - Automotive & foam seal undercoating
 - Vacuum bonded floor
 - Tubular aluminum frame
 - Structure wood flooring
 - 2 lb. density, block foam polystyrene insulation
 - Vacuum bonded sidewalls

- Gel-coated fiberglass skin
- Crowned and layered vacuum bonded roof
- Fiberglass roof
- Channeled drains for AC's
- Steel firewall with 2 lb. density, block foam polystyrene insulation
- Tubular steel front bulkhead
- Fiberglass front and rear caps
- 84" interior ceiling height

- EXTERIOR STANDARDS**
- Full body painted exterior (double clear coat)
 - Front mask protective film
 - Side-hinged exterior compartment doors w/ full pass through storage
 - (4) pt. fully automatic hydraulic leveling system
 - 8.5 Guardian diesel generator w/ full slide tray
 - 1200 Watt inverter/converter
 - (4) Six volt house batteries on slide tray
 - (2) Master electric shut off switches
 - Electrical panel w/ lighted indicators for fuses
 - Individual zoned manifold water supply system
 - Variable speed constant pressure water pump
 - All coach water filtration system (FO)
 - 13,500 BTU low profile front roof A/C w/ heat pump and ceiling ducts w/ drain
 - 40,000 BTU furnace
 - 10 gallon gas/electric water heater w/DSI
 - 24.5 gallon propane tank
 - Black water tank flush system

- Power entrance step
- Patio light
- Lighted entry assist handle
- Front entrance door w/ screen and deadbolt
- Power front door awning
- Deluxe power patio awning w/ remote
- Slide out room awnings
- Full length drip and awning rail
- 5,000 lb. receiver hitch
- Basement TV coax w/ 110V recept
- Air and "city mode" horns
- Heated power side view mirrors
- TV antenna w/ signal booster
- Shower skylight
- Docking lights
- Heated blankets for all water & holding tanks
- Full length mud flap w/ chrome trim
- (2) Piece rear ladder
- Auxillary LP hook-up-passenger side
- Auxillary air chuck-front firewall

EXTERIOR OPTIONS

- Full body painted exterior (double clear coat)
- 8.0 Onan diesel generator w/ full slide tray
- Dual pane, dark tint windows (including (2) exit windows)
- Slide out storage trays

DRIVER/PASSENGER AREA STANDARDS

- One piece windshield w/ power sun and blackout shades
- Dash radio w/ integrated back-up and side camera package
- Wrap around cockpit with (9) gauge instrument cluster
- LCD engine message center
- 4-Spoke VIP black steering wheel
- Telescopic/tilt steering wheel
- 6-Way power driver seat w/ 360 degree swivel and recliner
- Power footrest on passenger seat
- Passenger seat w/ 360 degree swivel and recliner
- Vinyl w/ carpeted floor mat for driver
- Hide-away steel framed step cover
- Lighted step well
- AM/FM/CD player w/ time display
- Sirius satellite radio capable
- DVD player
- Home theatre surround sound w/ bass woofer and mid range tweeter

- (8) Stereo speakers throughout coach
- 32" LCD color TV
- Satellite TV prep
- Distribution control box for entertainment electronics
- (2) Defroster fans w/ high and low settings
- Remote generator start switch
- Auxiliary start switch
- Driver/passenger map lights
- Driver/passenger cup holders
- Automotive dash AC/heater w/ deluxe controls
- Electronic battery disconnect switch

LIVING/DINING/GALLEY STANDARDS

- Controlled LED lighting package (bedroom and living area)
- (3) interior décor choices
- Booth dinette w/ retractable table top & drawers underneath
- Hide-a-bed sofa w/ air mattress
- Contoured overhead cabinets in slide out rooms
- Vinyl floor in entryway, galley and bathroom area
- Carpeted living room and dining area
- LED lighting throughout
- Full length mirror
- "Soft Touch" padded ceiling
- Fantastic Fan in galley area
- Night shades
- Metal blinds in galley window
- Solid surface counter tops w/ flush mount sink and stove covers
- Twin sink basins w/ covers
- Wall border behind galley & sofa
- Tub shower (360FW and 390BH)
- Slide out pantry
- Full extension metal drawer guides w/ ball bearings throughout
- Single lever faucet
- Convection/microwave oven
- 8 cubic ft. refrigerator w/ ice maker & raised wood panels
- 3-burner recessed cook top w/ Corian cover

LIVING/DINING/GALLEY OPTIONS

- Lockable 4' counter extension in galley w/ drawers and pantry – (390 QS only)
- 12 cubic foot, side by side, stainless steel refrigerator with ice maker (deletes pantry)

- 3-Burner recessed cook top w/ oven (NA on 360 QS)
- Executive Cherry, Symphony Cherry Natural Maple cabinet doors
- Solid wood, free standing dinette w/ 4 chairs
- "Soft Touch" hide-a-bed sofa
- "Soft Touch" love seat
- Vinyl floor throughout
- Extra large lavvy bowl sink
- Double lever lavatory faucets
- One piece fiberglass shower w/ glass door
- Porcelain china toilet
- Mirrored medicine cabinets
- Towel bars
- Metal blinds in lavatory window
- Fantastic Fan in bathroom & lavvy area

BEDROOM AREA STANDARDS

- 60"x 80" island queen bed w/ bedspread and decorative pillows
- Bedside wardrobe w/ shoe rack
- Dresser drawers and wardrobe type cabinets
- (2) Flip down LCD monitors w/ AV input and (2) wireless headphones (standard on 390BH)
- (2) DVD players in bunkhouse (standard on 390BH)
- Overhead cabinets
- 19" LCD TV
- Fluorescent lighting
- Individual reading lights
- Washer/dryer prep
- Carpet w/ padding
- Night stands
- Egress window

BEDROOM AREA OPTIONS

- Ceramic tile forward of bedroom (competition is only 12" and does not tile forward of the bedroom)
- Combination washer/dryer

SAFETY STANDARDS

- 110 GFI protected circuits (galley, bath and basement)
- Carbon monoxide detector
- LP gas detector
- Smoke alarm
- Surface mounted fire extinguisher



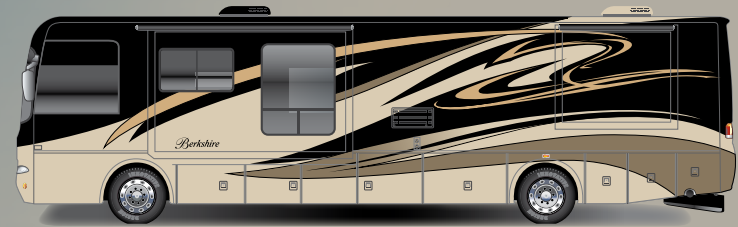
Berkshire

B E R K S H I R E C O L O R S A N D S P E C I F I C A T I O N S

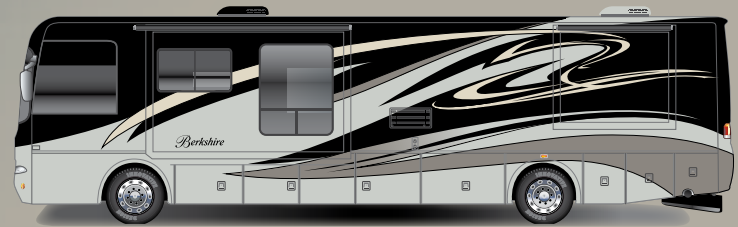
The Berkshire offers three exciting exterior colors to choose from as well as two reliable chassis options making your next trip a stylish one. Your luxury. Your destination.

340HP SPECIFICATIONS	360 QS	360 FWS	390 QS	390 BH	390 RB
int height	84"	84"	84"	84"	84"
int width	95.5"	95.5"	95.5"	95.5"	95.5"
ext height w/ satellite	12' 5"	12' 5"	12' 5"	12' 5"	12' 5"
w/o satellite	12' 3"	12' 3"	12' 3"	12' 3"	12' 3"
ext length w/ rear ladder	37' 9"	37' 9"	39' 9"	39' 9"	39' 9"
w/o rear ladder	37' 3"	37' 3"	39' 3"	39' 3"	39' 3"
ext width	100"	100"	100"	100"	100"
wheel base	228"	228"	228"	228"	228"
GVWR (lbs)	28k	28k	28k	28k	28k
GAWR front (lbs)	10.5k	10.5k	10.5k	10.5k	10.5k
GAWR rear (lbs)	17.5k	17.5k	17.5k	17.5k	17.5k
GCWR (lbs)	33k	33k	33k	33k	33k

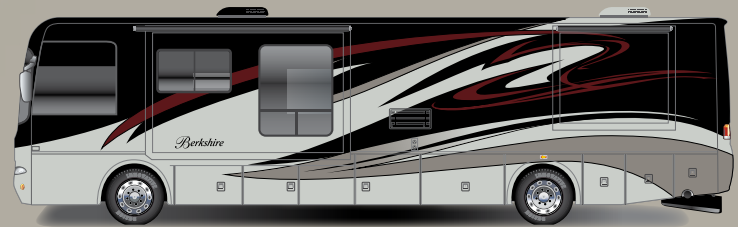
360HP SPECIFICATIONS	360 QS	360 FWS	390 QS	390 BH	390 RB
GVWR (lbs)	29.5k	29.5k	29.5k	29.5k	29.5k
GAWR front (lbs)	10.5k	10.5k	10.5k	10.5k	10.5k
GAWR rear (lbs)	19k	19k	19k	19k	19k
GCWR (lbs)	39.5k	39.5k	39.5k	39.5k	39.5k



golden marble



midnight pearl



granite fire

BERKSHIRE FLOORPLANS AND INTERIOR OPTIONS

The Berkshire engineering and design team has developed a full line of versatile and functional floorplans to accommodate your every traveling need. Combined with the interior options, the Berkshire is sure to leave a lasting impression.

mocha living room



mocha bedroom



caramel living room



caramel bedroom



pearl living room



pearl bedroom



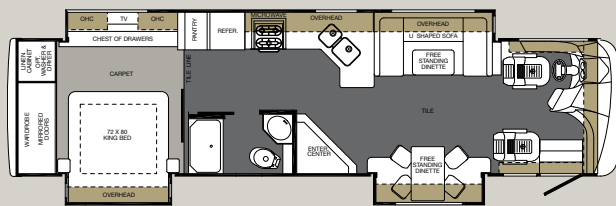
natural maple



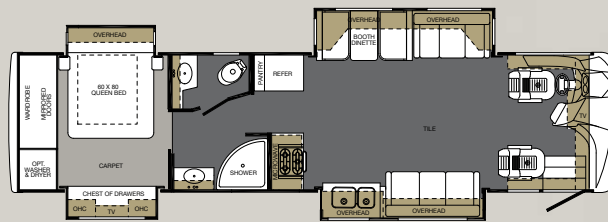
symphony cherry



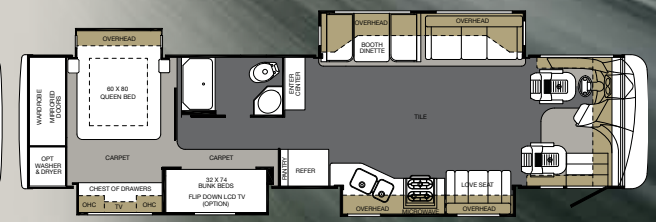
executive cherry



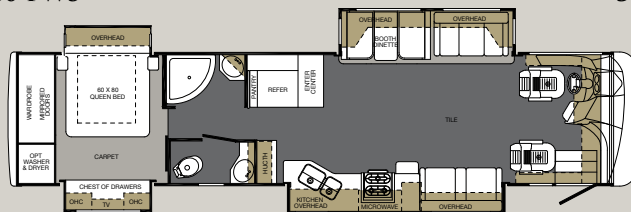
360 FWS



360 QS



390 BH



390 QS



390 RB

Berkshire

T H E B E R K S H I R E N A M E

Named after its parent company, the Berkshire Class A motorhome is the flagship of our fleet. Only the finest appointments and attention to detail go into building it. With this in mind, the Berkshire lives up to it's name in both quality and value.

Forest River is proud to be part of the Berkshire Hathaway family.



TO FIND YOUR LOCAL DEALER
VISIT: WWW.FORESTRIVERINC.COM

Forest River has yet another exclusive feature to offer: One year of free roadside assistance will be given to every 2010 Berkshire customer. This is just one more way to say "Thank you" and to ensure an enjoyable traveling experience.



Forest River, Inc.
Diesel Motorized Division
1800 West Hively Avenue
Elkhart, Indiana, 46517
574.522.3693
www.forestriverinc.com/berkshire

Scan this barcode using a QR Reader on your smart phone to learn more about Forest River.

All illustrations and specifications contained in this literature are based on the latest product information at time of publication. Forest River reserves the right to make changes in prices, colors, materials, equipment and specifications at anytime without notice and assumes no responsibility for any error in this literature. All units are shipped F.O.B. Goshen, Indiana.

CONSULT YOUR LOCAL DEALER FOR WARRANTY INFORMATION.