

EM PRESS 2003

EM PRESS



2003 EDITION

▶
LEADING

THE

WAY
▶



WHERE THE JOURNEY BEGINS

Live life to the fullest with Triple E's 2003 Empress. Meander from sea to sea and see everything in between. Encounter nature's wonders, explore new cities, and at the end of each day, take the time to marvel at how far you've come.



A3852FB shown with Jewelled Amber decor



NEW DÉCOR CHOICES 3



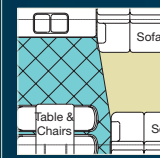
IMPORTANT DETAILS 4



AMPLE STORAGE 5



CONSTRUCTION 6



NEW FLOOR PLANS 7

EMPRESS



2003 EDITION

THE LARGEST HOME ON WHEELS

- THIRTY EIGHT FEET OF WELL APPOINTED SPACE
- ROOMY BEDROOM COMPLETE WITH SLIDE-OUT QUEEN SIZE BED
- IMPRESSIVE LIVING & DINING AREA

SOPHISTICATED DESIGN & LAYOUT

- WELL ENGINEERED TO FIT YOUR NEEDS
- STYLISH COORDINATED INTERIOR DESIGN
- FIRST CLASS FLEXSTEEL FURNITURE

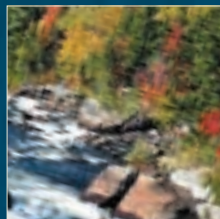
WORLD CLASS CONSTRUCTION

- BUILT ON A SOLID FREIGHTLINER FOUNDATION
- WELL INSULATED FOR FOUR SEASON COMFORT
- MANUFACTURED WITH TOP GRADE MATERIALS

TAILORING TO FIT YOUR LIFE

- CHOOSE FROM A HOST OF EXCITING OPTIONS
- SELECT THE DÉCOR THAT BEST SUITES YOUR TASTE
- PICK FROM THE WELL THOUGHT OUT FLOOR PLANS

THE LITTLE THINGS MAKE A BIG DIFFERENCE



FOR SEASON AFTER SEASON OF COMFORT

The Empress is the perfect living environment. Built for total four-season versatility, you can enjoy life on the road year-round.

In the winter months, the Empress's high insulation values, which are the best in its class, ensure you stay warm and cozy. Similarly, in the spring and fall, chills are locked out just as style and flexibility are locked in. And as the mercury rises in the summer, you control the climate inside thanks to well-engineered air conditioning systems.



SIDE RADIATOR

The Empress has been engineered with Freightliner's side radiator to improve cooling capacity and allow for more horsepower to the wheels.



WALL/ROOF/FLOOR

The well insulated wall, roof and floor construction maximizes climate control inside your coach for four season comfort.

See more on Page 6





BAGGAGE COMPARTMENT

Fully carpeted baggage compartment sealed by the insulated aluminum doors which are supported by gas struts for easy access.

LOW E GLASS

All windows include coated Low "E" glass to reflect heat wave effectively.
See Climate Guard on Page 6

SUNGUARD FLEXROOF

The Empress features an exceptionally durable Filon embossed seamless Sunguard® flexroof.

THE SPACE YOU NEED

Commanding elegance and prestige inside and out, the Empress was developed with every luxury in mind. Thirty eight feet and equipped with all the features, options, and amenities you could wish for, the glorious Empress is as complete as it is beautiful. The Empress has been designed to be the best motorhome on the road, bar none! This impressive and formidable coach turns heads on and off the road, its lavish interior enhanced in every possible way to make you feel right at home. Uncompromising attention to detail and elegant style put the Empress in a class of its own.



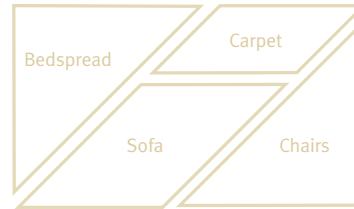
For more information on the Empress's features, visit our website at www.tripleerr.com



THE LOOK YOU WANT

Along with your choice of three floorplans and a host of options, choose one of three distinct interior design schemes, each with a complementary exterior paint treatment.

Selected by a group of professionals, the combinations skillfully coordinate upholstery, carpeting, and window treatments.



OAK COLOUR: CHERRY NUTMEG



MAPLE COLOUR: GOLDEN MAPLE

GOLDEN WILLOW



STANDARD PAINT



FULL BODY PAINT OPTION

MYSTIC DUNES



STANDARD PAINT



FULL BODY PAINT OPTION

JEWELLED AMBER



STANDARD PAINT



FULL BODY PAINT OPTION


ALWAYS MORE

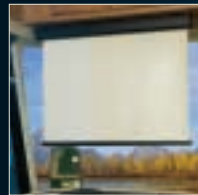
ATTENTION TO DETAIL

Every room in the Empress boasts subtle touches that contribute to a deluxe living environment:

- The full service kitchen has beautiful SOLID SURFACE countertops and a brushed finished telescoping faucet;
- The five star sleeping quarters feature full length mirrored closet doors and a residential quality queen size mattress.
- The spacious bath area has stylish fixtures and a garden tub or an optional neo-angle shower.

From the skylights right down to the ceramic floor tile, you'll discover thoughtful and elegant features at every opportunity - resulting in a truly outstanding final product.

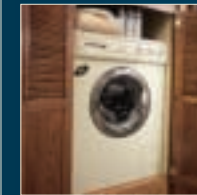
 For a virtual tour of the Empress, visit our website at www.tripleev.com



Choose the optional touch of a button driver or passenger sunvisor.



For added convenience, you'll appreciate the driver side entry/exit door.



Long road trips require all the amenities, even an optional compact washer/dryer.

ROOM TO SPARE

SPACE SOLUTIONS

The Empress is equipped with extensive storage capacity so you're not limited as to what to bring along or buy en route. Golf clubs, barbeques, fishing gear, umbrellas, or extra chairs will fit easily and gas strut supported baggage doors add to your convenience.



Interior space has been carefully considered as well. The entry steps are hidden with a slide-out air operated panel to add valuable square footage.



Another enhanced feature is the handy slide-out generator and battery tray compartment which allows for easy access and serviceability.



The contoured automotive style dashboard makes for greater comfort on longer trips.

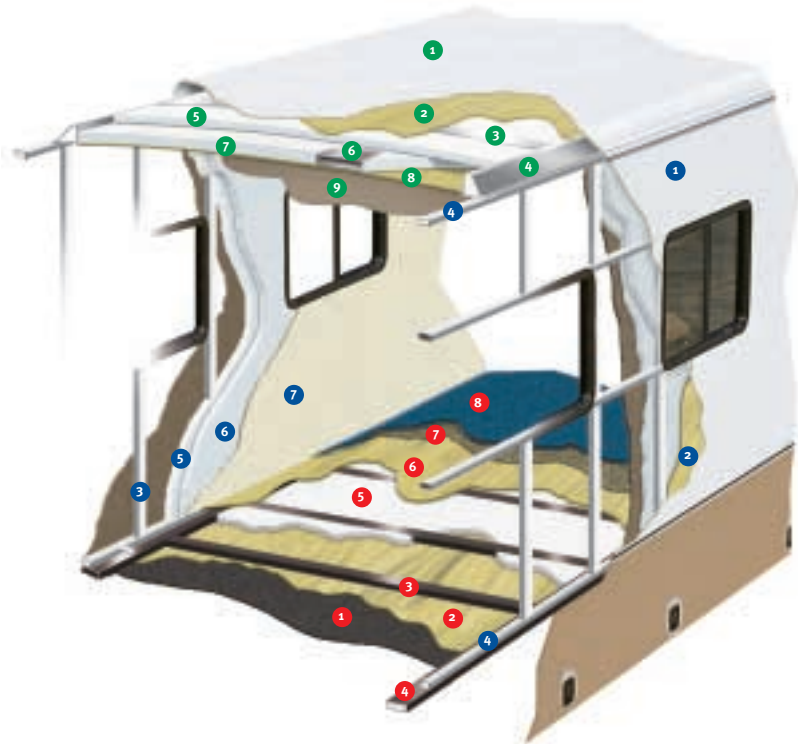


New for 2003 - a big button radio which allows for quick visual adjustments.

QUALITY CONSTRUCTION

WE TAKE PRIDE IN ENSURING THE FOUNDATION OF THE EMPRESS IS AS SOUND AS THE INTERIOR IS ELEGANT.

The major considerations in building a top quality motorhome are long lasting beauty coupled with the ability to stand up to any weather conditions. The coach is basically an aluminium and steel framed structure with vacuum bonded gelcoat fiberglass side walls and a domed Sunguard FRP Flexroof.



Floor (Exterior to Interior)

1. One Piece Woven Poly Propylene Underbelly
2. 3/8" Plywood
3. Tubular Steel Framing (Welded)
4. Styrofoam Filled Wall Support Plates
5. 1" Block Styrofoam Insulation
6. 1/2" Plywood
7. Carpet Underlay
8. Carpeting (Floor covering)

Sidewalls (Exterior to Interior)

1. Seamless Fiberglass Exterior
2. Luaun Structural Backer
3. Aluminium Framing (Welded)
4. Styrofoam Filled Floor and Roof Plate
5. 1" Block Styrofoam Insulation
6. 1/2" Styrofoam Thermal Break Insulation
7. Interior Decorative Luaun Wall Panels

Roof (Exterior to Interior)

1. Domed Sunguard FRP Flexroof
2. Luaun Backer
3. Aluminium Roof Truss
4. Styrofoam Filled Roof Truss Supports
5. 1 1/2" Block Styrofoam Insulation
6. Enclosed/Insulated Climate Control Ducting
7. 2" Block Styrofoam Thermal Break Insulation
8. 3/8" Plywood
9. One Piece Headliner

CLIMATEGUARD

INTERIOR COMFORT AND EXTERIOR PROTECTION

Born of our northern heritage, Triple E's exclusive Climate Guard® system is quite simply the best interior comfort and exterior protection package available in the recreational vehicle industry today.

The Climate Guard® System has been developed with today's motorhome enthusiast in mind. It provides year round climate controlled comfort for passengers, as well as built in protection for the motorhome itself, ensuring years of trouble free operation and enjoyment.

INTERIOR COMFORT

- Two Dometic® roof air conditioners ducted front to rear to control the temperature throughout the coach.
- High output chassis air conditioner for traveling comfort.
- Electronic ignition furnace designed to maintain requested interior temperatures in extreme exterior temperatures.
- High output chassis heater to allow for quick windshield defrost.
- Two rear auxiliary automotive heaters complete with electric valve for comfort throughout the coach during travel as well as heating the fresh water and holding tank compartments.
- Vacuum bonded aluminum framed insulated sidewall and roof construction for high strength and maintained warmth throughout the coach.
- Thermal barrier window system which combats condensation in the coach by providing a thermal break in the aluminum main frame. This feature in the dual pane window impedes the transfer of cold through the frame by using an insulating material thereby making the interior of the window warmer and less subject to condensation.
- All windows are coated "Low E" glass which in summer prevents outdoor long-wave heat energy from entering the coach by reflecting back outside. In winter, indoor long-wave heat energy is reflected back into the coach keeping the coach warm.
- Insulated vent covers to provide superior insulation for the fantastic fans and roof vents.

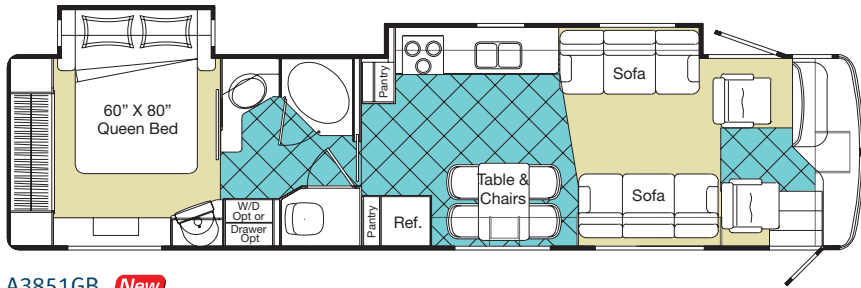
EXTERIOR PROTECTION

- Scratch and hail resistant gel coat fiberglass sidewalls with all weather exterior finish, easy to maintain, will not rust, pit or fade.
- Domed, seamless, insulated Filon® embossed Sunguard® flexroof to promote quick water run off and ease of maintenance.
- Urethane undercoating to protect against dust and moisture and reduces stone and road noise.
- Enclosed, insulated and heated fresh water and holding tanks assuring you of extreme cold climate performance for your plumbing system. The tanks are heated from two different sources: the motorhome's ducted furnace while parked or the rear auxiliary heater when travelling.
- Winterization System complete with potable antifreeze pickup reservoirs. This system allows you to easily drain your tanks and fill the water lines with antifreeze to prevent freeze up.
- Steel, Insulated and sealed firewall to protect the driver and passenger from the outside elements.
- Additional 1/2" thermal break insulation beyond the standard 1" styrofoam block insulation separating the climate controlled interior from the outside elements.

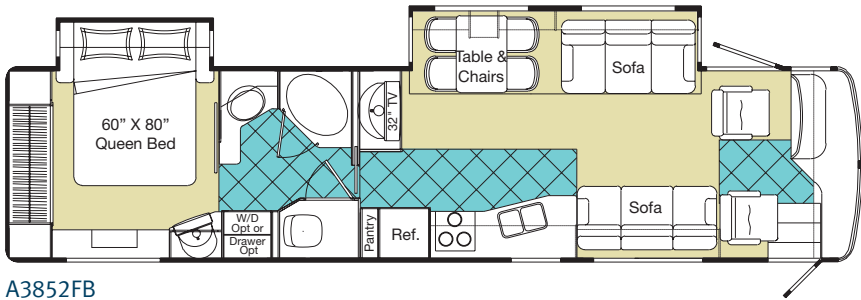


See for yourself how spacious the Empress is. Take a virtual tour at www.tripleerv.com.

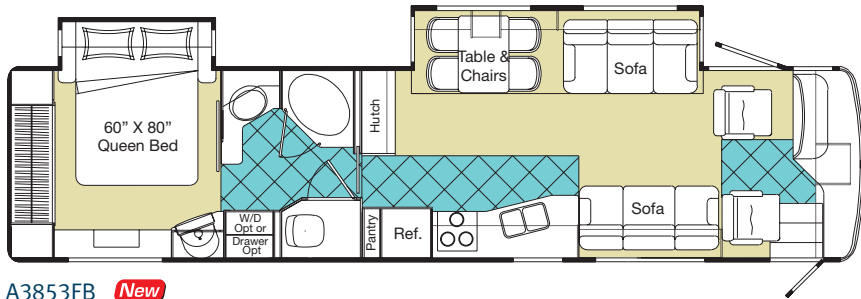
FLOORPLANS



A3851GB **New**



A3852FB



A3853FB **New**



New for 2003

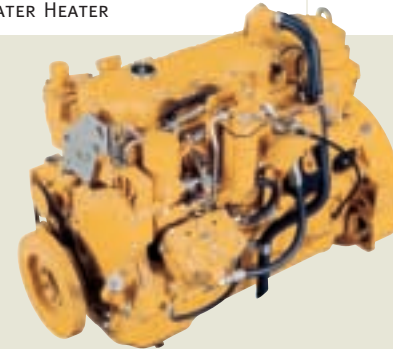
Product improvement is a continuing process at Triple E Recreational Vehicles. Thus we reserve the right to change specifications on any or all products without prior notice; errors and omissions excepted. Triple E Recreational Vehicles is under no obligation to undertake modification to units manufactured prior to changes on specifications.

NOTE: Please see your dealer for weights of factory installed options.

SPECIFICATIONS

	A3851GB	A3852FB	A3853FB
CHASSIS: FREIGHTLINER XC SERIES ENGINE: 330HP TURBO CATERPILLAR DIESEL			
GVWR-LBS(KG)	29410(13388)	29410(13388)	29410(13388)
UVW-LBS(KG)	24118(10938)	24264(11029)	24211(10980)
NCC-LBS(KG)	6882(3121)	6736(3062)	6789(3079)
WHEELBASE-IN(MM)	252"(6401)	252"(6401)	252"(6401)
LENGTH-FT(MM)	38'6"(11734)	38'6"(11734)	38'6"(11734)
WIDTH-FT(MM)	8'4"(2534)	8'4"(2534)	8'4"(2534)
HEIGHT Incl.A/C-FT(MM)	12' 3"(3734)	12' 3"(3734)	12' 3"(3734)
**WATER TANK CAP.-GAL(L)	102(386)	102(386)	102(386)
HOLDING TANK CAP GREY.-GAL(L)	57(216)	57(216)	57(216)
HOLDING TANK CAP. BLACK-GAL(L)	57(216)	57(216)	57(216)
FUEL CAP.-GAL(L)	100(379)	100(379)	100(379)
PROPANE CAP.-GAL(L)	32(121)	32(121)	32(121)

**-INCLUDES 10GAL WATER HEATER



The caterpillar 330 horsepower turbo diesel gives you the power you need.

GVWR

GROSS VEHICLE WEIGHT RATING means the maximum permissible weight of this motorhome. The GVWR is equal to or greater than the sum of the unloaded vehicle weight (UVW) plus the net carrying capacity (NCC).

UVW

UNLOADED VEHICLE WEIGHT means the weight of the motorhome as built at the factory with full fuel, engine oil, and coolants. The UVW does not include cargo, fresh water, LP gas, occupants, factory or dealer installed accessories.

NCC

NET CARRYING CAPACITY means the maximum weight of all occupants, including the driver, personal belongings, food, fresh water, LP gas, tools, tongue weight of towed vehicle, factory and dealer installed accessories, etc., that can be carried by this motorhome. (NCC is equal to or less than GVWR minus UVW.)

NOTE: Please see your dealer for weights of factory installed options.

S = Standard O = Option **New** New for 2002

STANDARDS AND OPTIONS

A3851GB
A3852FB
A3853FB

A3851GB
A3852FB
A3853FB

VEHICULAR

Air Brakes - c/w Slack Adjusters	S	S	S
Air Conditioner - Chassis	S	S	S
Air Horns	S	S	S
Air Suspension - c/w Bilstein Shock Absorbers	S	S	S
Alternator - 160 Amp	S	S	S
Block Heater (1000 W) with Switch in Bedroom	S	S	S
Bumpers - Integrated Fiberglass – Steel Reinforced	S	S	S
New Chassis – Freightliner c/w Caterpillar 330 HP Turbo Diesel (XC Series) Raised Rail Side Radiator – GVWR 29,410 lbs	S	S	S
Compass/Thermometer - Dash Mounted Directional Compass with Exterior Temperature Readout	S	S	S
Cruise Control	S	S	S
Door - Driver Door c/w Power Window	S	S	S
Exhaust Brake	S	S	S
Fans - Chrome Cockpit Ventilating with Dash Switch	S	S	S
Fuel Fill - Concealed Locking Fuel Fill Access On Both Sides	S	S	S
New Headlights - Styled with Xenon Bulbs	S	S	S
Hitch - Trailer Hitch Receiver w/ wiring and plug - Class III	S	S	S
IFS - Independent Front Suspension Upgrade (Increases GVWR to 31,000 lbs, Tire Upgrade to 275/80R22.5XZE)	O	O	O
Jacks - Automatic HWH Levelling System c/w Auto Air Dump	S	S	S
Light - High Mount Stoplight – LED Long Life	S	S	S
Lights - Halogen Automotive Driving Lights	S	S	S
Mats - Driver/Passenger Floor mats	S	S	S
New Mirrors - Heated Remote Chrome Power Mirrors	S	S	S
New Mud Guard - Monogrammed Triple E Rear Mudguard (Stainless Steel on Rubber)	O	O	O
Rust Protection	O	O	O
Steering Wheel - with Leather Cover, VIP Controls include Wiper and Washer Tilt/Telescopic	S	S	S
Switch - Battery Selector for Radio	S	S	S
Switch - Battery Boost (Coach to Chassis Batteries)	S	S	S
Tires - Michelin Radial 255/80R22.5XRV	S	S	S
Transmission - Allison 3000 MH Six Speed Automatic c/w Lock Up	S	S	S
Transmission Cooler	S	S	S
Undercoating - Automotive Type	S	S	S
Wheels - Alcoa Aluminium	S	S	S
Wipers - Wet Arm Windshield Wipers c/w Intermittent Function	S	S	S

CONSTRUCTION

Baggage Doors - Aluminium Baggage Doors c/w Gas Struts and Slam Latches	S	S	S
Fiberglass Molded Front & Rear Mask	S	S	S
Lined and Lighted Baggage Compartments	S	S	S
New Roof - Domed Sunguard® FRP Flexroof	S	S	S
Steel Cab Floor, Firewall and Dash Structure	S	S	S
Vacuum Bonded Aluminium Framed Insulated Sidewall & Roof Construction With Thermal Break	S	S	S
Vacuum Bonded Gel Coat Fiberglass Sidewalls	S	S	S
Vacuum Bonded Steel Framed Insulated Floor Construction	S	S	S
Windows - Thermal Barrier Window System with Low E Coating	S	S	S

COACH EXTERIOR

Door - Screened Entry Door with Deadbolt Lock	S	S	S
Exterior Shower	S	S	S
Graphics - Painted Exterior Graphics	S	S	S
Handle - Entry & Driver Door Assist Handles (Interior Mounted)	S	S	S
Ladder - Exterior Ladder c/w Detachable Lower Section	O	O	O
Lights - Deluxe Patio Lights (2)	S	S	S
Lights - Docking Lamps (2 Side, 2 Rear)	S	S	S
Paint - Full Body Exterior Paint with Clear Coat	O	O	O
Step - Electric Retractable Entry Step	S	S	S

COACH INTERIOR

Bedsread - Decorative Bedsread c/w Throw Pillows	S	S	S
Blinds - Side Driver & Passenger Roller Blinds	S	S	S
Cabinetry - "Golden Maple" Cabinetry with Maple Fridge Insert	O	O	O
Cabinetry - Solid Oak Cabinet Face Frames and Paneling	S	S	S
Ceiling - Domed with Automotive "Soft Touch" Headliner	S	S	S
Cover - Pneumatic Powered Front Step Cover	S	S	S
Covers - Insulated Vent Covers	O	O	O
Detectors - Electronic Smoke, LP and CO Detectors	S	S	S
Doors - Sculptured Solid Oak Panel Cabinet Doors	S	S	S
Drawers - Dual Roller Glide Drawers c/w Travel Lock	S	S	S
Drawers - Slide Out Drawer Option in Washer/Dryer Cabinet (N/A with Washer/Dryer Option)	O	O	O
Fire Extinguisher - Dry Chemical	S	S	S
New Flooring - Ceramic Tile in Entrance Area	S	S	S
Headboard - Fabric Wrapped	S	S	S
Latches - Snap Latches on all Cabinet Doors	S	S	S
Lighting - Courtesy Floor Lamps	S	S	S
Safe - Keylock Safebox	S	S	S
Shades - Day/Night Pleated c/w Bedroom Blackout	S	S	S
Skylight - in Living Area	O	O	O
Slide Out - Bed Slide Out with Rear Wardrobe and Make Up Table	S	S	S
Storage - Easy Under Bed Storage/Engine Access c/w Gas Struts	S	S	S
Sun Visor - Power Driver's Sun Visor	O	O	O
Sun Visor - Power Passenger's Sun Visor	O	O	O
Tray - Dash Mounted Computer Tray	O	O	O

FURNITURE

Booth Dinette - Booth Dinette With Slide Out Drawers and Solid Surface Pedestal Mount Table	O	O	O
Chair - Ultra Leather Recliner with Refreshment Center c/w Flip Table			
In Lieu of Ultra Leather Easy Bed on Passenger Side	O	O	O
New Hide A Bed - Cloth Hide a Bed on Drivers Side with Air Coil Mattress c/w 110V Air Pump (Available with Recliner Option Only)	-	O	O
Hide A Bed - Ultra Leather Hide a Bed on the Driver's Side (Contrasting Color) c/w 110V Air Pump (Available with Recliner Option Only)	-	O	O
Magic Bed - Cloth Magic Bed on Driver's Side	O	-	-
Magic Bed - Ultra Leather Magic Bed On Drivers Side (Contrasting Color)	O	-	-
Mattress - Residential Quality Queen Bed (60" x 80")	S	S	S
Mattress - Upgrade	O	O	O

	A3851GB	A3852FB	A3853FB		A3851GB	A3852FB	A3853FB
New Seat - Ultra Leather 8 Way Power Seat with Power Foot Rest on Passenger Side	0	0	0	New Stereo - DHS Mobile Theatre System with AM/FM CD Stereo with 6 Stack			
Seat - Ultra Leather Swivel Power Drivers & Passengers Captain Chairs with Integral Seat Belts - 8 Way Power	S	S	S	in Dash CD Changer w/ Big Buttons - 80 Watt	0	0	0
Sofa - Cloth Easy Bed on Drivers Side	S	S	S	Stereo - Exterior AM/FM – CD Stereo with Shielded Speakers	0	0	0
Sofa - Cloth Flexsteel Versaflex Lounger on driver's side	-	0	0	Stereo - Separate AM/FM CD Stereo in Bedroom c/w Alarm	S	S	S
Sofa - Ultra Leather Easy Bed Passenger Side	S	S	S	Telephone & Cable TV Hook-up - Exterior	S	S	S
Sofa - Ultra Leather Versaflex Lounger on Driver's Side (contrasting color)	-	0	0	TV - AC 20" Exterior TV in Baggage Compartment c/w Slide-out Tray	0	0	0
Table - Solid Oak Wall Mount Table c/w Oak Chairs (Maple if Option Chosen)	S	-	-	TV - AC 20" Color Stereo TV c/w Remote in Bedroom	S	S	S
Table - Solid Surface Table c/w Oak Chairs (Maple if Option Chosen)	-	S	S	TV - AC 20" Color Stereo TV c/w Remote in Overhead Console	S	-	S
GALLEY FEATURES				TV - AC 32" Color Stereo TV c/w Remote in Entertainment Cabinet Rear of Slide Out	-	S	-
Coffee Maker	S	S	S	TV Antenna - Roof Top Retractable Antenna c/w Booster	S	S	S
Cook top - Recessed Cook Top c/w High Output Sealed Burner	S	S	S	VCR - HiFi Video Cassette Recorder	S	S	S
Countertop - Solid Surface Countertop c/w Matching Cutting Board Sink Covers	S	S	S	HEATING VENTILATING AND AIR CONDITIONING			
Cover - Recessed Bi Fold Range Cover	S	S	S	Air Conditioner - Dual Ducted (2) 13,500 BTU	S	S	S
Fan - Thermostatically Controlled Fan in Living Area	S	S	S	Furnace - 40,000 BTU Central Furnace c/w Electronic Ignition and In Floor Ducting	S	S	S
Faucets - Deluxe Single Lever Faucet	S	S	S	Heater - Dual Rear Auxiliary Automotive Heaters c/w Electric Valve	S	S	S
Flooring - Ceramic Tile Flooring	S	S	S	ELECTRICAL			
New Flooring - Thermostatically Controlled Heating Element Under Ceramic Tile in Galley	0	0	0	Alarm System c/w 2 Motion Detectors	0	0	0
Micro/Convection Oven - (OTR) c/w 110v Range Hood and Light	S	S	S	Batteries - 4 x 6V Deep Cycle Auxiliary Battery c/w Slide Out Battery Tray	S	S	S
Oven - LP Gas Oven	0	0	0	Bi Directional Isolator Relay Delay (BIRD) Battery Charging System	S	S	S
Refrigerator - Dometic® Side by Side 12 cu. Ft. c/w Ice Maker LP/Electric	0	0	0	New Generator - 5.5 KW Onan Quiet Diesel on Slide Out Tray (Available Late 2002)	0	0	0
Refrigerator Inserts - Raised Sculptured Solid Oak Fridge Inserts	S	S	S	New Generator - 6.5 KW Onan LP Gas Marquis (will not start below -8C) with Air Assist Slide Out	0	0	0
Refrigerator - Dometic® Two Door 10 Cu. Ft. c/w Ice Maker, LP/Electric	S	S	S	Generator - 7.5 KW Onan Quiet Diesel With Air Assist Slide out	0	0	0
Sink - Recessed Solid Surface Sink	S	S	S	Generator Ready Package	S	S	S
Water Purifier	S	S	S	Inverter - 2000 Watt Inverter c/w 100 Amp Charger	S	S	S
LAVATORY				Panel - 50 Amp Electrical Service c/w Energy Management System	S	S	S
Countertop - Solid Surface Counter and Basin	S	S	S	Pre-wire - 110V/12V Receptacles in Baggage Compartment (Freezer Prep)	S	S	S
Fan - Thermostatically Controlled Fan in Bath	S	S	S	Pre-wire - for Solar Panel	0	0	0
New Fan - Thermostatically Controlled Non Reversible Fan in Toilet Room	S	S	S	New Pre-wire For Power Main Awning	S	S	S
Faucet - Deluxe Faucets	S	S	S	Switch - Electronic Battery Disconnect (Coach Batteries)	S	S	S
Flooring - Ceramic Tile Flooring	S	S	S	PLUMBING AND LP SYSTEMS			
Flooring - Thermostatically Controlled Heating Element Under Ceramic Tile in Lavatory	0	0	0	Black Tank Flush System	S	S	S
Shower - Neo Angle Fiberglass Enclosed Shower	0	0	0	Holder - Swing Out Under Body Sewer Hose Holder	S	S	S
Skylight – Shower Compartment	S	S	S	Holding Tanks - Enclosed and Insulated, Dual Heated Waste Holding Tanks	S	S	S
Toilet - Aurora China Toilet c/w Water Saver With Sprayer	S	S	S	LP Tank - Easy Access Propane Tank	S	S	S
Tub - Enclosed Fiberglass Garden Tub	S	S	S	Switch - 3-Way Water Pump Switching	S	S	S
Washer/Dryer Prep - for Washer/Dryer option	S	S	S	Water Heater - Electronic Ignition Gas/Electric/Motoraid Water Heater (10 Gal)	S	S	S
New Window - with Valance and Venetian Blind in Toilet Room	S	S	S	Water Tank - Enclosed and Insulated, Dual Heated Fresh Water Tank	S	S	S
ENTERTAINMENT				Winterization System - c/w Potable Antifreeze Pick Up Tank	S	S	S
CB Antenna - includes Coax Lead in under Dash	0	0	0	SYSTEMS			
Master Control - Audio/Video Master Control Switch Box	S	S	S	Central Vacuum - With Outlet in Baggage Compartment	S	S	S
Pre-wire - Satellite Dish Pre-wire (with 12V Power)	0	0	0	Freezer / Refrigerator - On Slide Out Tray 1.38 Cu Ft (AC/DC)	0	0	0
New Stereo - AM/FM Cassette in Dash Stereo w/ Separate 6 Disk CD Changer with Big Buttons - 80 Watt	0	0	0	New Rear-view Camera/Monitor – Color LCD Display Mounted in Dash	S	S	S
New Stereo - AM/FM CD in Dash Stereo w/ Big Buttons - 80 Watt	S	S	S	Washer/Dryer (vented)	0	0	0
New Stereo - AM/FM CD Stereo c/w 6 Stack in Dash CD Changer w/ Big Buttons - 80 Watt	0	0	0	Factory P.D.I.	0	0	0

TRIPLE E QUALITY

A Triple E Empress Motorhome is a combination of first-class materials and quality controlled construction. Built with a solid foundation, integrity is never compromised – inside and out.

Exteriors are virtually maintenance free and abrasion resistant.

Cabinetry is constructed with screws rather than staples to ensure structural integrity and durability. Both strong and moisture repellent, the solid oak doors are a front to ample storage space.

Designer interior decors are a mixture of style and functionality – with quality fabrics developed to handle years of wear while meeting or exceeding flame retardant standards.

All Triple E products are built to CSA (Canadian Standards Association) or RVIA (Recreational Vehicle Industry Association) Standards. Triple E was one of the first RV manufacturers to obtain the ISO 9002 certification – your assurance of the careful construction and high quality materials that are part and parcel of every Triple E Recreational Vehicle.



MAKE SURE YOU VISIT OUR WEBSITE AT www.tripleerv.com



P.O. Box 1230, Winkler, MB
Canada R6W 4C4
Tel: (204) 325-4361
Fax: (204) 325-5241
www.tripleerv.com

Experience the Difference

Triple E is proud to offer a
2 YEAR LIMITED WARRANTY

on structure as well as most major components.
Please see your dealer for further details.



This combination of labels assures the purchaser that the manufacturer has met or surpassed CSA-CRVA-RVIA standards covering electrical services, gas services, plumbing services, and vehicular safety.

Empress motorhomes exceed 96 inches in width. In some states, 96 inches is the maximum width of vehicles travelling some or all state roads. It is the responsibility of the owner to be familiar with the road usage laws of the states in which you travel.

COACH NET

Triple E is a proud partner of Coach Net, an extensive support program that provides complete and fully paid roadside assistance, emergency road service, and special warranty support benefits that follow you throughout Canada and the US. Service is free for the first year of ownership and is available at a nominal fee for subsequent years.

Coach Net's 24-hour Customer Care includes:

- Emergency roadside assistance including tow vehicle
- Toll free technician hotline for operation and service support
- Toll free nationwide service appointment assistance
- Free custom trip routing and color maps
- Warranty service at over 6,800 locations throughout North America
- Benefits such as free jump starts, tire changes, fuel delivery, and lock out service

Brochure pictures may be shown with optional equipment.