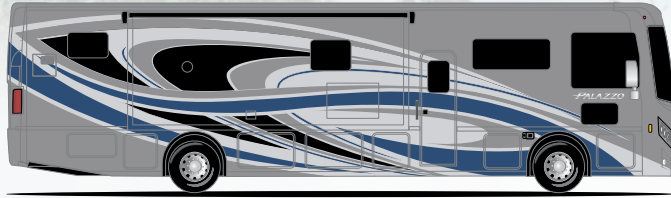
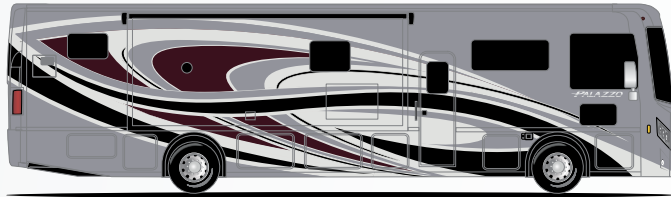


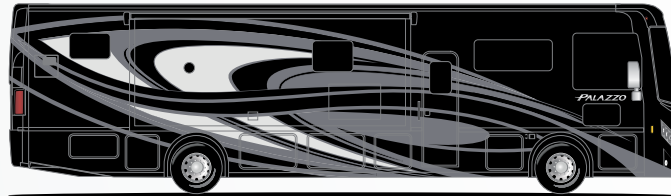
PALAZZO®



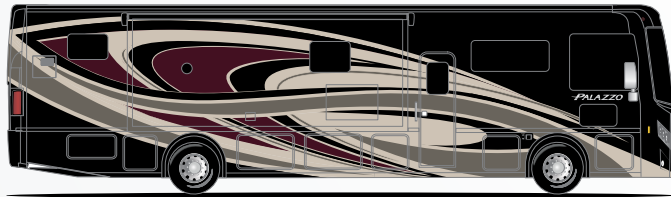
CHAMBERS BAY



OAKMONT



ST. ANDREWS



TORREY PINES



PACIFIC

STANDARD COLLECTION



REGATTA

STUDIO COLLECTION



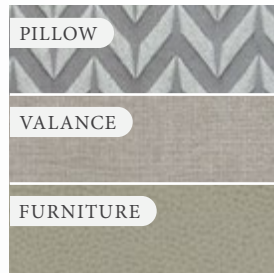
SANIBEL



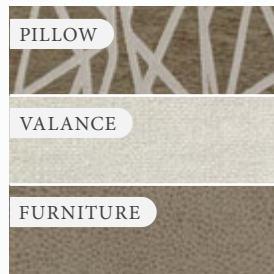
CLOUD COVER



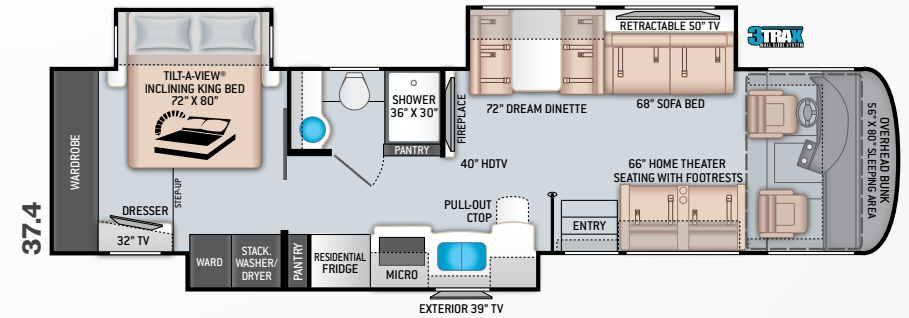
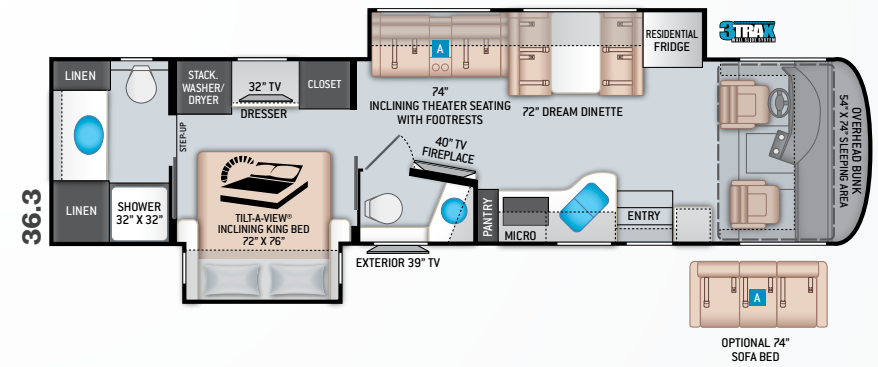
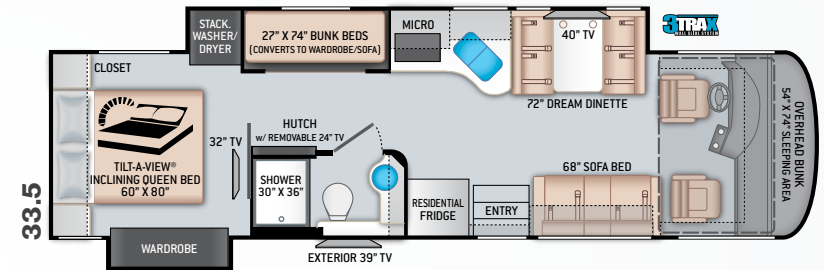
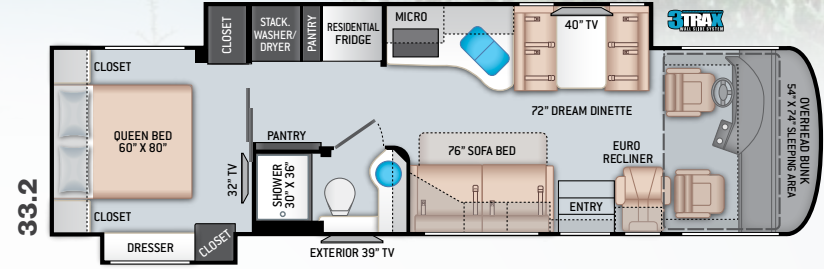
MOUNTAIN FROST



OPTIONAL STUDIO COLLECTION PANTERA



OPTIONAL STUDIO COLLECTION SORRENTO



Featured Highlights

CONSTRUCTION & EXTERIOR

- Freightliner® XC-S Straight Rail Chassis with Atlas Foundation™
- Cummins® ISB 6.7L Diesel Engine with 300HP, 660 lb.-ft. Torque (33.2 & 33.5)
- Cummins® ISB 6.7L Diesel Engine with 340HP, 700 lb.-ft. Torque (36.3 & 37.4)
- 6-Speed Allison Automatic Transmission
- I-Beam Front Axle with 55° Wheel Cut
- Air-Ride™ Suspension
- Full Air Front & Rear Drum Anti-Lock Brakes
- Exhaust Brake
- Sachs® Shock Absorbers
- 90-gallon Fuel Tank with Dual Fills
- One-Piece Fiberglass Front & Rear Caps
- One-Piece Windshield
- One-Piece TPO Roof
- Full-Body Paint Package with Gel-Coat Sidewalls with Invisible Front Paint Protection
- Automatic Leveling Jacks with Touchpad Controls
- Basement Pass-Through Storage Compartment
- Easy Slide Storage Tray (33.2, 33.5 & 36.3)
- Side-Hinged, Flush Mount Radius Compartment Doors
- Lighted Storage Compartments
- Power Patio Lateral Arm Awning with Integrated LED Lighting
- Slideout Room Topper Awnings
- 3TRAX® Wall Slide System
- Frameless Dual Pane Windows
- Roof Ladder
- Electric Entry Step

AUTOMOTIVE & COCKPIT

- Entry Door with Deadbolt Lock
- 10,000-lb. Trailer Hitch with 7-pin Round Connector
- 10.1" Touchscreen Dash Radio with Bluetooth®, Navigation & Sirius/XM® Radio
- Chrome Heated/Remote Exterior Mirrors with Integrated Side View Cameras
- Leatherette Reclining/Swivel Captain's Chairs with Lumbar Support (Passenger Seat has Electric Footrest)
- Power Adjustable Driver's Seat
- Emergency Engine Start Switch
- Tilt/Telescoping Steering Column
- Cruise Control
- Dash Fans
- Fog Lights
- Power Roller Shade on Windshield
- Manual Roller Shades on Side Windows
- Bird's Eye™ Window
- 255/70R 22.5" Radial Tires with Aluminum Wheels
- Valve Stem Extenders on Rear Wheels
- Dash Workstation with 110-volt & 12-volt Outlets
- Power Drop-Down Hide-Away Overhead Bunk with Cotton Cloud™ Mattress & Bunk Ladder

INTERIOR

- Residential Vinyl Flooring
- High-Gloss Glazed Cabinetry with Solid Wood Raised Panel Cabinet

DOORS & NICKEL FINISH HARDWARE

- LED Lighting
- Soft Touch Vinyl Ceiling
- Window Solar & Privacy Shades in Living Area
- Leatherette Euro Recliner with Integrated Footrest (33.2)
- Leatherette Inclining Theater Seating with Footrests (36.3 & 37.4)
- Leatherette Sofa Bed (33.2, 33.5 & 37.4)
- Dream Dinette® Booth with 4 Seat Belts
- Electric Fireplace with Remote Control (36.3 & 37.4)

INTERIOR OPTIONS

- Leatherette Sofa Bed (36.3)
- Studio Collection Interior Decor Package - Includes: Cabinetry with Rake Style Doors & Matte Finish

KITCHEN

- Stainless Steel Residential Refrigerator with Ice Maker
- Electric Induction Cooktop
- 30" Over-the-Range Convection Microwave Oven
- Solid Surface Countertops
- Large, Double Bowl Stainless Steel Sink & Single Handle Faucet with Pull-Down Sprayer
- 12-volt Attic Fan with Cover

BEDROOM & BATHROOM

- King Size Bed with Tilt-A-View® Inclining Mechanism (36.3 & 37.4)
- Queen Size Bed with Tilt-A-View® Inclining Mechanism (33.5)
- Queen Size Bed (33.2)
- Attractive Headboard, Bedspread & Throw Pillows
- Bunk Beds – Converts to Sofa (33.5)
- USB Charging Ports in Nightstands
- Sconce Wall Lighting (33.2, 33.5 & 36.3)
- Porcelain Toilet
- Oversized Shower with Glass Door
- Power Vent in Bathroom

ENTERTAINMENT

- 49" LED TV in Living Area (37.4)
- 40" LED TV in Living Area
- Blu-Ray Player & Sound Bar
- 32" LED TV in Bedroom
- LED TVs in Bunk Bed Area (33.5)
- Exterior 39" LED TV on Manual Swivel with Bluetooth® Sound Bar
- Cable TV & HDMI Video Ready
- Winegard® Connect™ WiFi / 4G / TV Antenna

ELECTRICAL & PLUMBING

- Onan® RV QD 6000 Diesel Generator
- 50-amp Shoreline Power Cord
- 2000-watt Inverter/100-amp Converter
- Rapid Camp+® Multiplex Wiring Control System with 7" Screen & App Enabled

- 100-watt Solar Charging System with Power Controller
- Dual 13,500 BTU Mid-Profile Ducted Roof Air Conditioners
- Automatic Generator Start
- Four (4) Auxiliary House Batteries
- Battery Disconnect Switch
- Tankless Water Heater
- Water Heater Bypass System
- 360° Siphon® RV Holding Tank Vent Cap
- Black Tank Flush System
- Stackable Washer/Dryer
- Outside Shower
- Exterior LP Connection
- Systems Control Center

For a complete listing of available features, visit thormotorcoach.com/palazzo.



	33.2	33.5	36.3	37.4
Chassis	Freightliner XC-S	Freightliner XC-S	Freightliner XC-S	Freightliner XC-S
Gross Vehicle (GVWR)	26,000	26,000	30,500	31,020
Gross Combined (GCWR)	30,000	30,000	33,000	33,000
Wheel Base	208"	208"	242"	256"
Exterior Length (w/o ladder)	34'-9"	34'-9"	37'-7"	38'-9"
Exterior Height (w/AC)	12'-1"	12'-1"	12'-1"	12'-1"
Exterior Width (w/o mirrors)	101"	101"	101"	101"
Interior Height (living area)	82"	82"	82"	82"
Awning Size	18'	18'	18'	15' / 12'-4"
Fuel (gal)	90	90	90	90
LPG (lbs)	105	105	105	105
Fresh/Waste/Gray Water (gal)	95 / 40 / 40	95 / 40 / 40	95 / 40F-17R / 40	95 / 40 / 40
Water Heater (gal)	Tankless, On-Demand	Tankless, On-Demand	Tankless, On-Demand	Tankless, On-Demand
Furnace (BTUs)	35,000	35,000	35,000	35,000
Exterior Storage Capacity (cu. ft.)	126	126	170	170
Hitch Weight Rating (lbs)	10,000	10,000	10,000	10,000



Made to fit.

P.O. Box 1486, Elkhart, IN 46515 Sales Department: 800.860.5658

thormotorcoach.com/palazzo



IMPORTANT—PLEASE READ: This brochure reflects product design, fabrication, material, components and specifications at the date of printing, which date is disclosed below. Please visit us online at ThorMotorCoach.com or consult with your selling dealership for the latest in standards, options, specification and technical information. Photographs in the brochure may depict optional equipment or may only be available in certain floor plans. Components, appliances and the chassis may have been manufactured in a calendar year before the vehicle's designated model year. All capacities are approximate. The actual length of the vehicle may differ from that indicated in the brochure due to variances in the manufacturing processes and/or installed components. All dry weights are based on standard model features and do not include optional features or equipment. Component part and appliance manufacturers issue limited warranties covering portions of the vehicle not covered under the limited warranty we issue. Copyright Thor Motor Coach, Inc. © MY 07/28/2020